



Leaderway *VERTICAL MACHINING CENTER
(LINEAR GUIDE WAY)*

VERTICAL MACHINING CENTER

PARTS LIST

V450

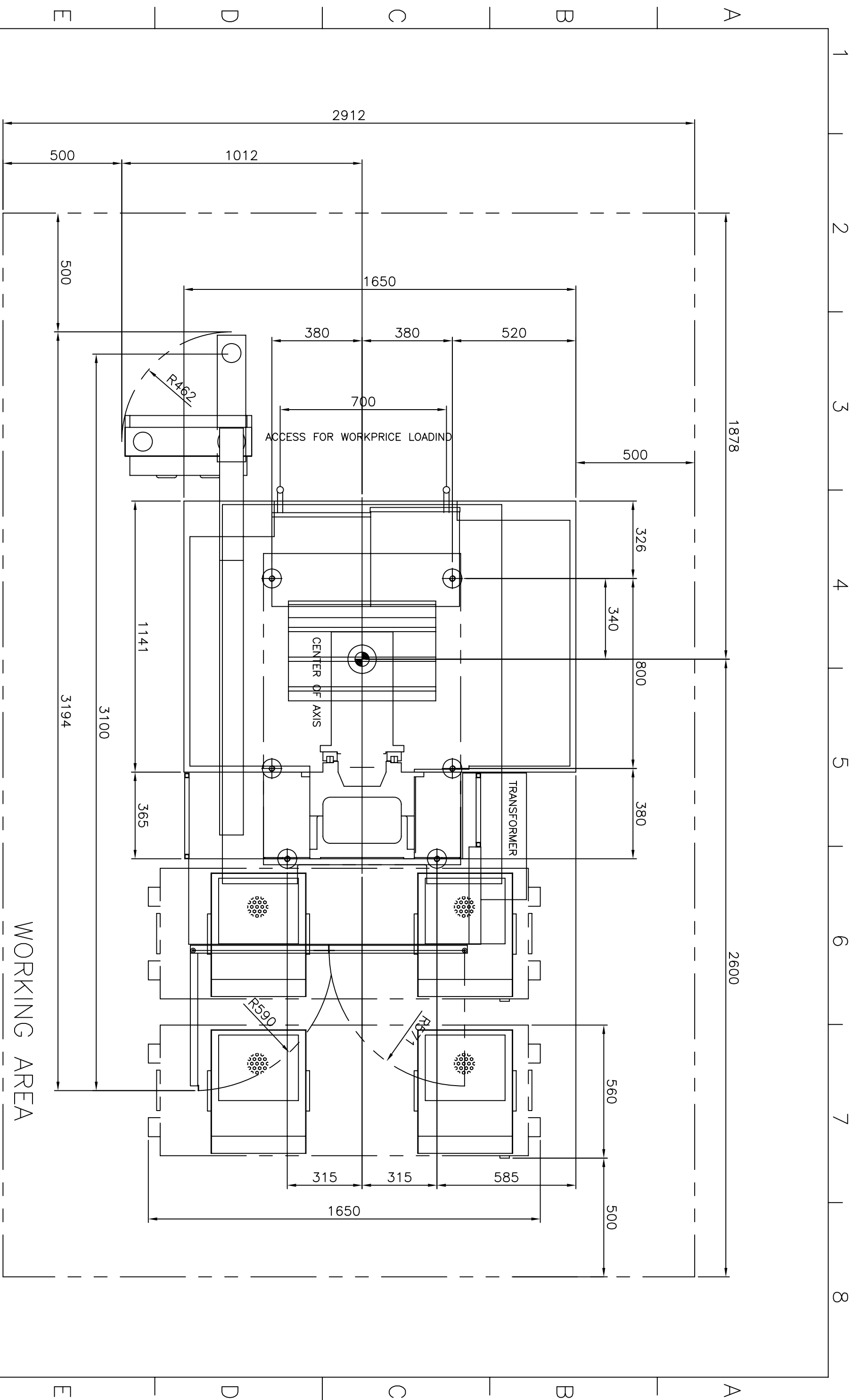
LEADERWAY CNC TECHNOLOGIES CO., LTD.

NO. 36, Ln. 211, Taiming Rd.,
Wuri Dist, TAICHUNG 41468, TAIWAN

TEL: +886-4-2335-0711

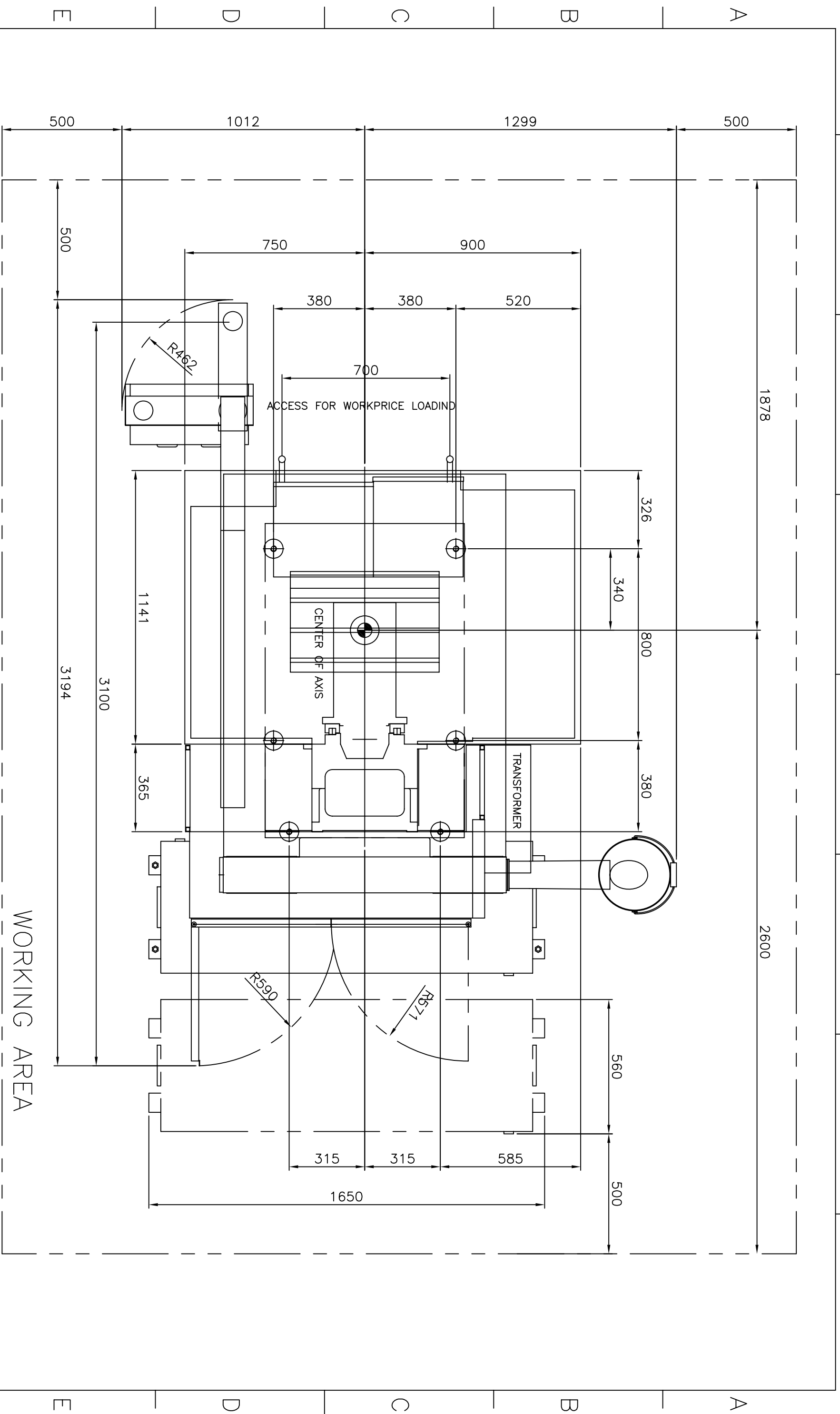
FAX: +886-4-2335-0986





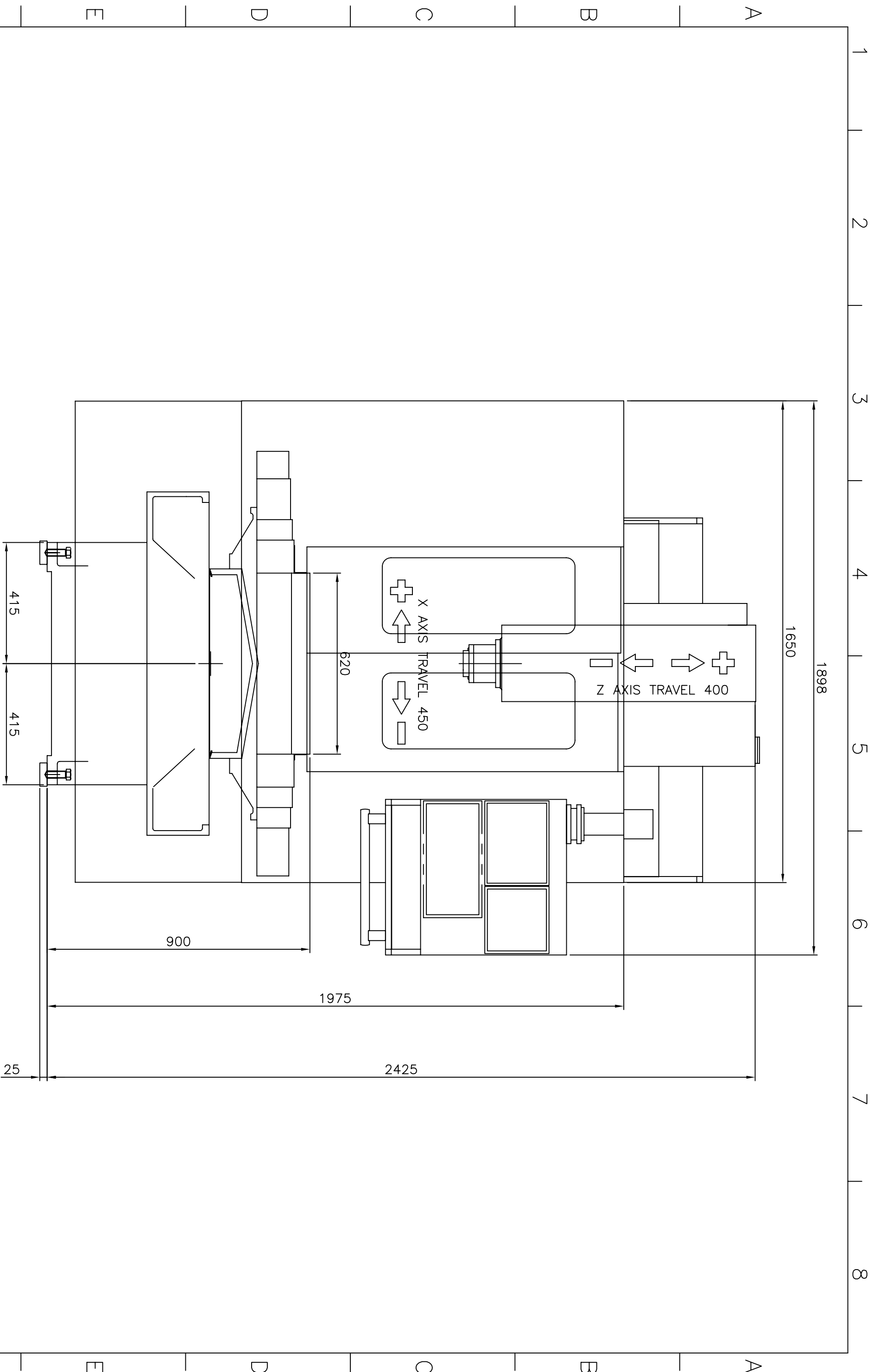
Leaderway Machinery Co. Ltd.

Scale	Drawing Name			Page
1:15	FOUNDATION ANCHOR SET UP DRAWING			1/2
Drawn	Name	Date	Draw No.	A3
Control	Any	97.09.08	815001200 (V450+Simple Tank)	



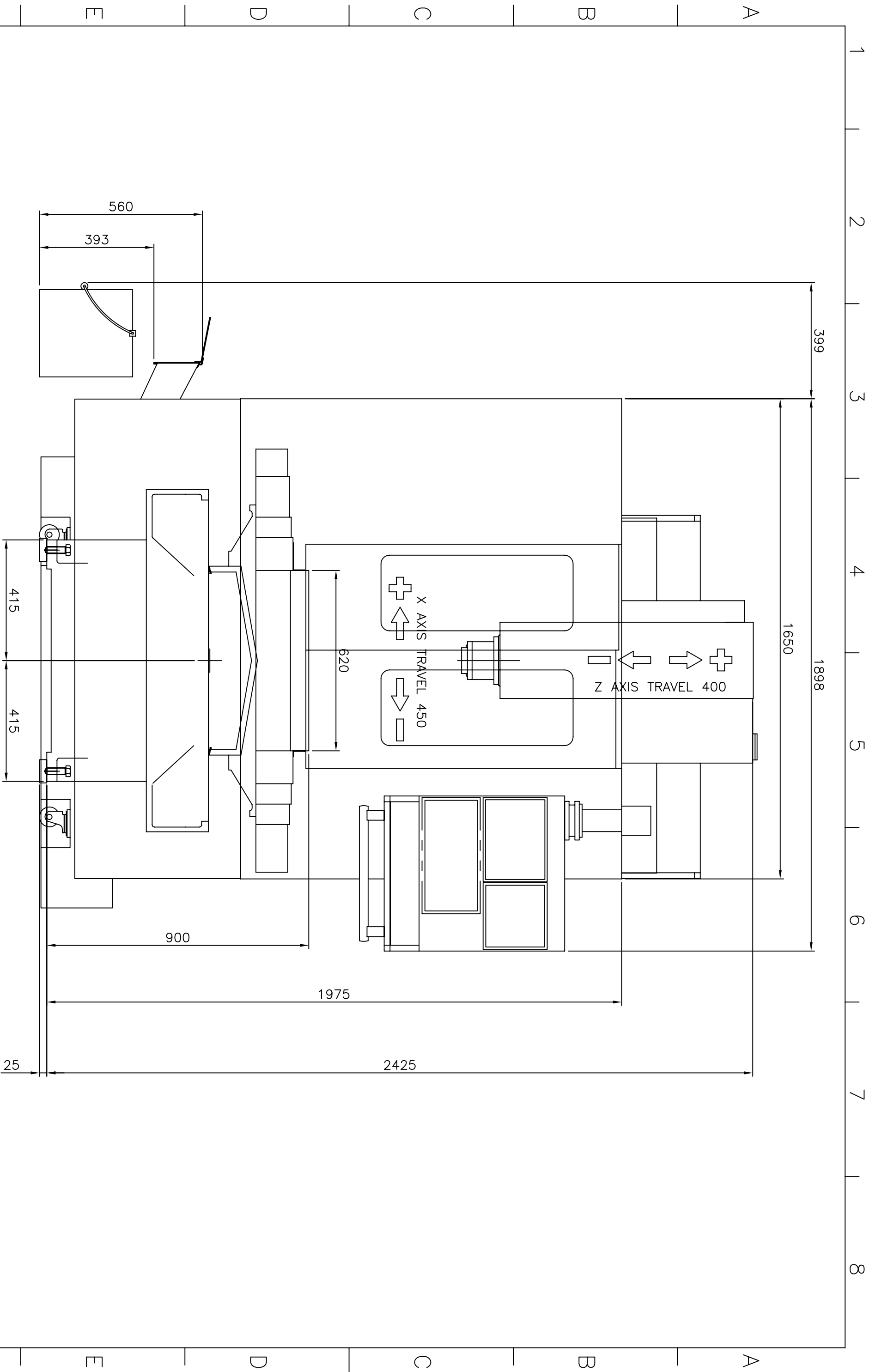
Leaderway Machinery Co. Ltd.

Scale	1:15			Drawing Name	FOUNDATION ANCHOR SET UP DRAWING			Page	2/2
Drawn	Name	Date	Draw No.	Control	Name	Date	Draw No.	8150012C0 (V450+COIL TYPE CONVEYOR)	
	Amy	98.09.08			Amy	98.09.29			



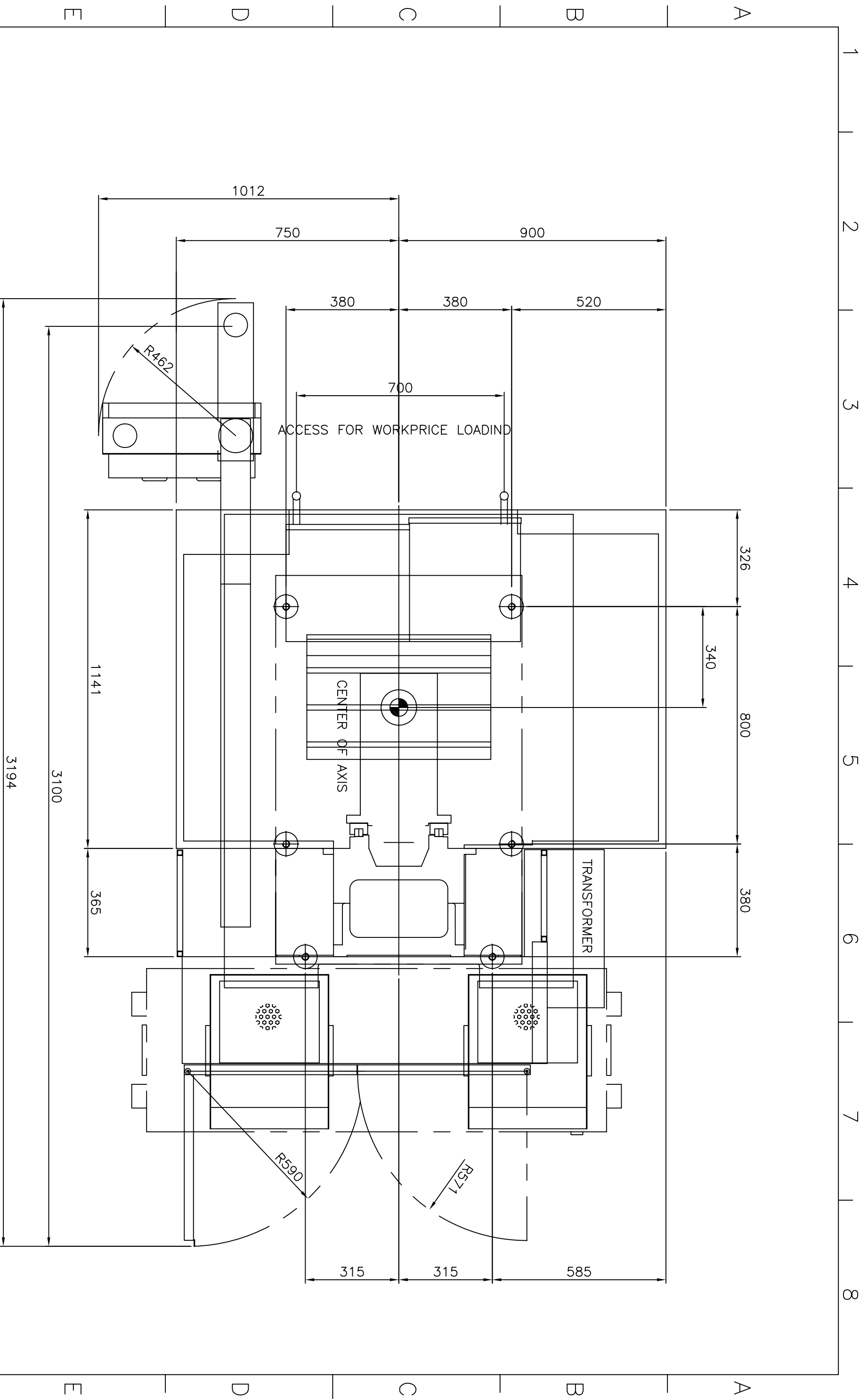
Leaderway Machinery Co. Ltd.

Scale	Drawing Name			Page
1:12	OUTLING DIMENSION (FRONT VIEW)			1/3
Drawn	Name	Date	Draw No.	A3
Control	JACK	91.03.06	8150012C0 (V450)	
	Any	98.09.29		



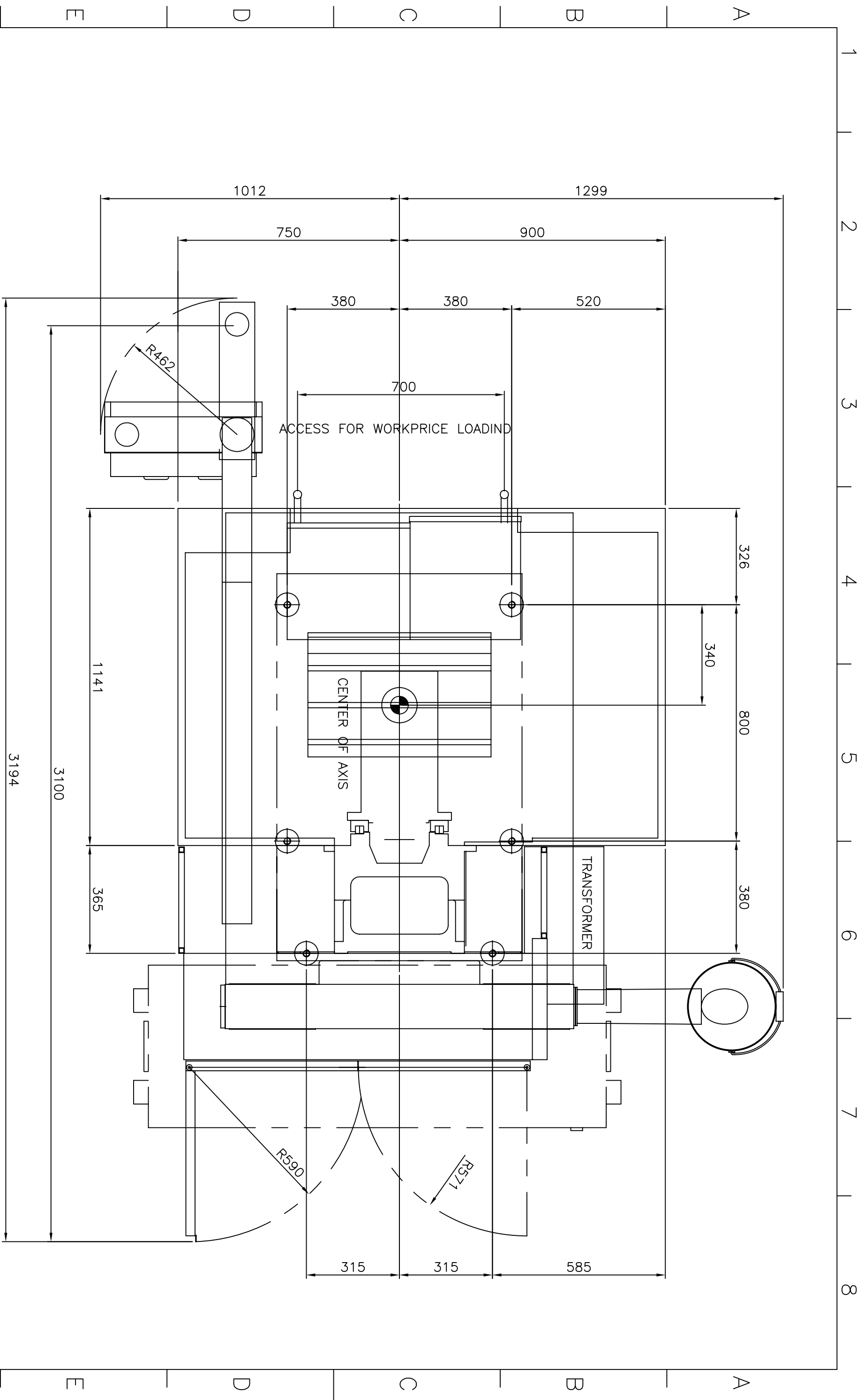
Leaderway Machinery Co. Ltd.

Scale		Drawing Name		Page	
1:12		OUTLING DIMENSION (FRONT VIEW)		1/3	
Drawn		Name		Draw No.	
JACK		JACK		91.03.06	
Control		Any		815001200 (V450/COIL TYPE CONVEYOR)	
				98.09.29	



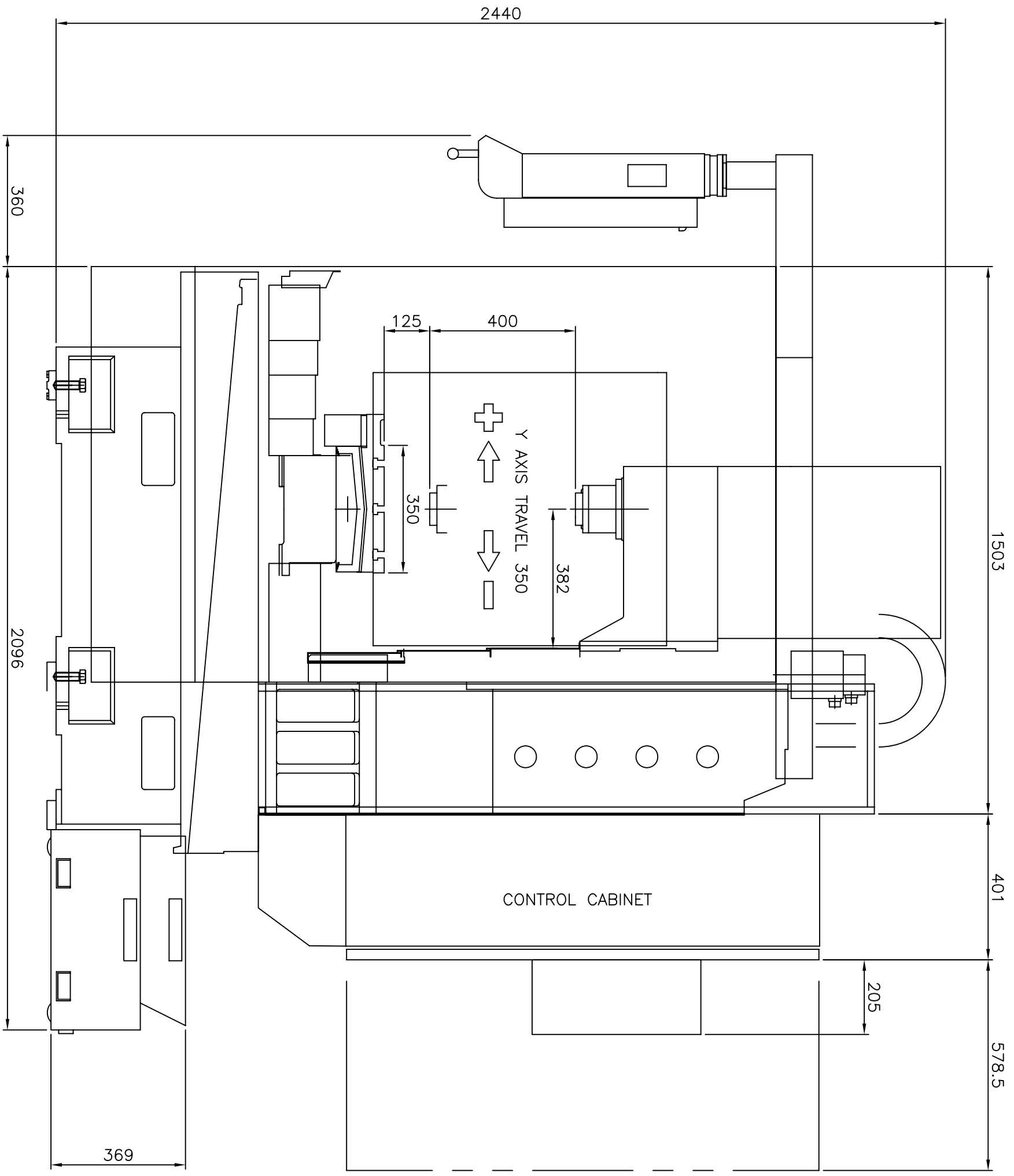
Leaderway Machinery Co. Ltd.

Scale	1:12			Drawing Name	OUTLING DIMENSION (TOP VIEW)			Page	2/3
Drawn	JACK	Date	91.03.06	Draw No.	8150012C0 (V450)			A3	
Control	AMY	Date	98.09.29						



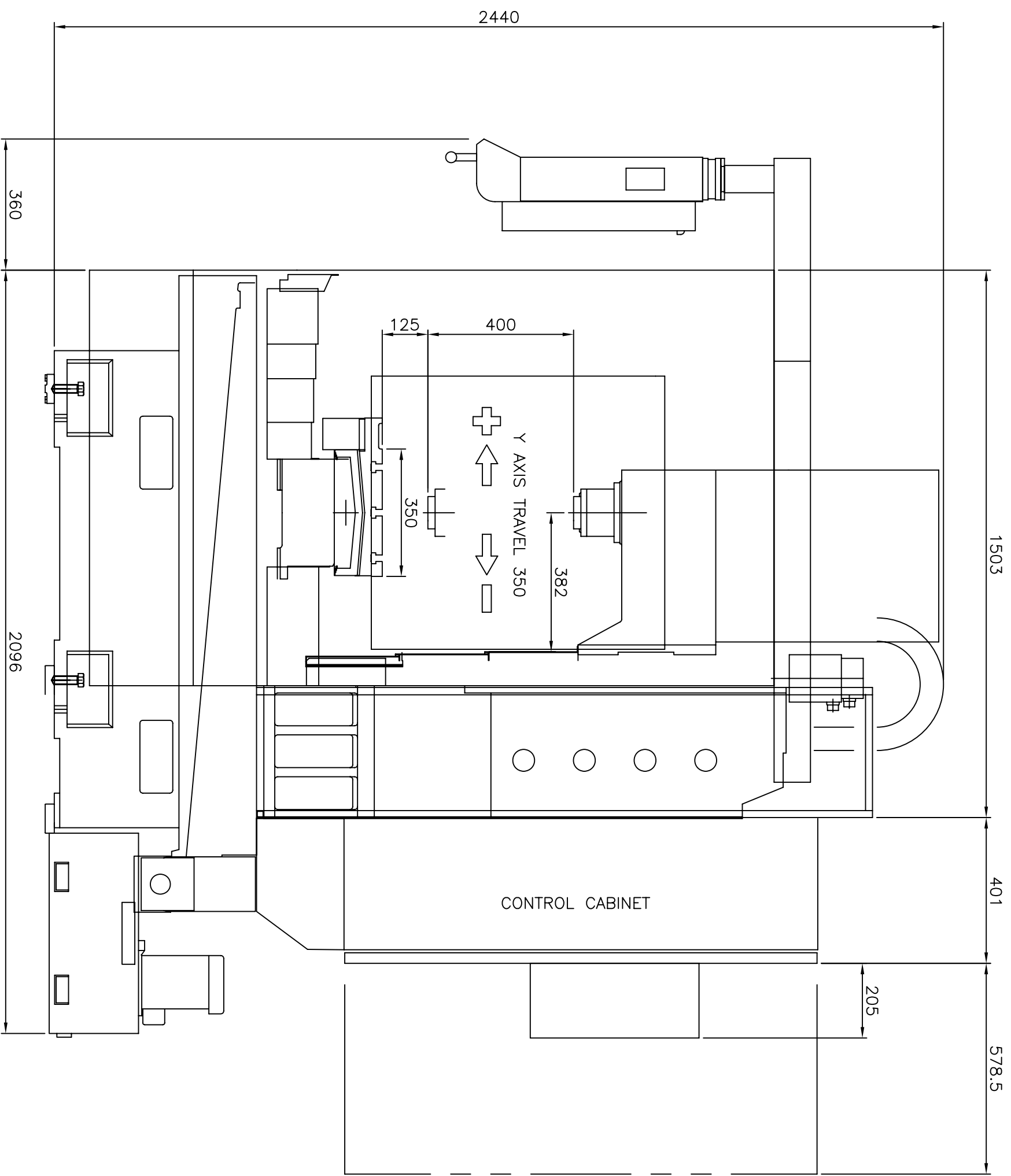
Leaderway Machinery Co. Ltd.

Scale	Drawing Name			Page
1:12	OUTLING DIMENSION (TOP VIEW)			2/3
Drawn	Name	Date	Draw No.	A3
Control	JACK Amy	91.03.06 98.09.29	8150012C0	
(V450/COIL TYPE CONVEYOR)				



Leaderway Machinery Co. Ltd.

Scale	Drawing Name			Page
1:12	OUTLING DIMENSION (RIGHT SIDE VIEW)			3/3
Drawn	Name	Date	Draw No.	A3
Control	JACK Amy	98.09.29	8150012C0 (V450)	

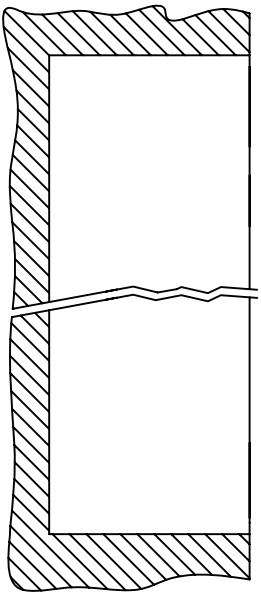


Leaderway Machinery Co. Ltd.

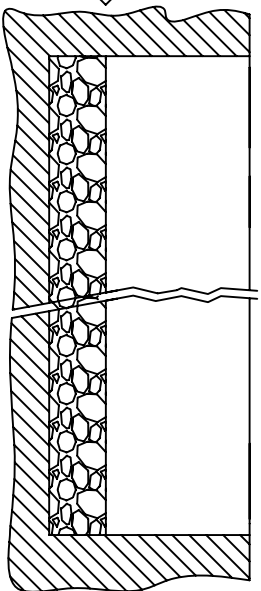
Scale	Drawing Name			Page
1:12	OUTLING DIMENSION (RIGHT SIDE VIEW)			3/3
	Drawn	Name	Date	Draw No.
	Control	JACK Amy	91.03.06	
			98.09.29	

E
E
D
C
B
A
F
E
D
C
B
A

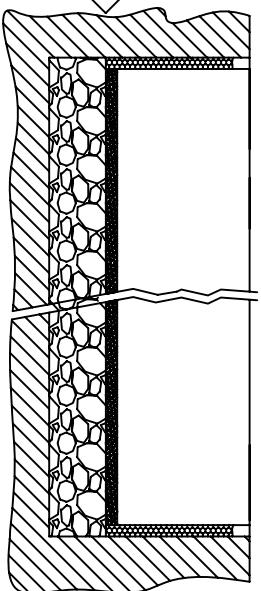
1
2
3
4
5
6
7
8



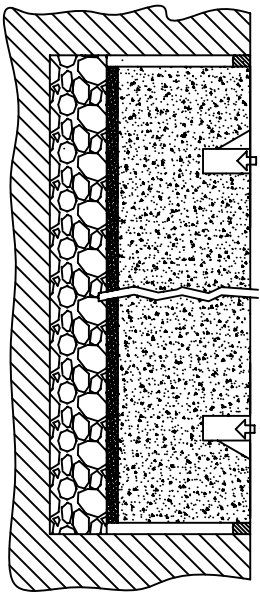
According to foundation drawing set the foundation area



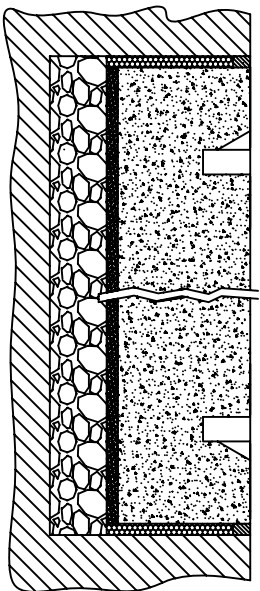
First, put stones on the bottom
stone dia 10mm~300mm



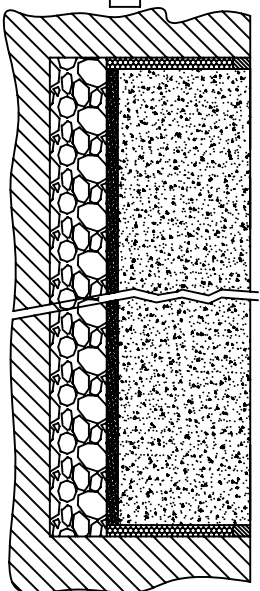
Fill up the sand and styrofoam plate on the other side



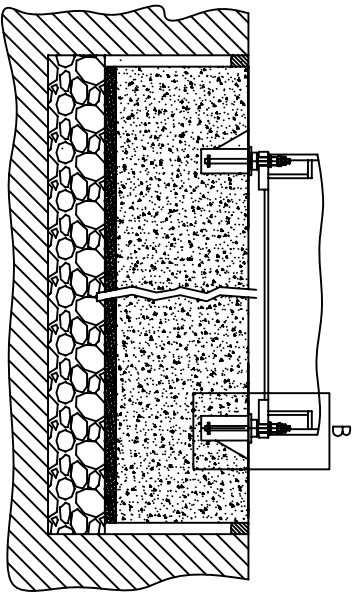
hoist machine higher and install the anchor bolts



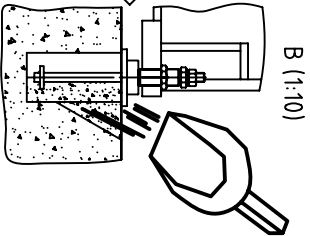
Dig out the hole of anchor bolts



Put the oil-proof and anti-heat stripe on the other side, then fill up the cement(3000pci)
Harden time about 7~10 days



Put whole machine into the position



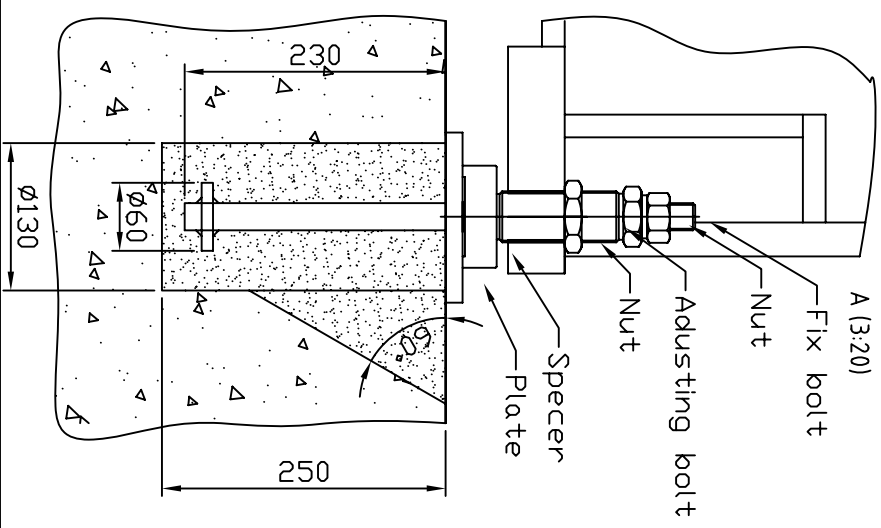
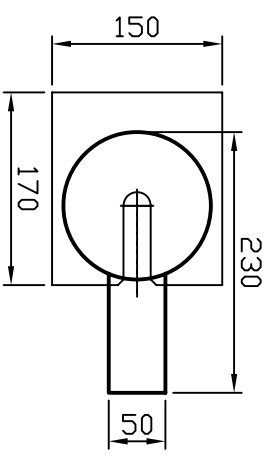
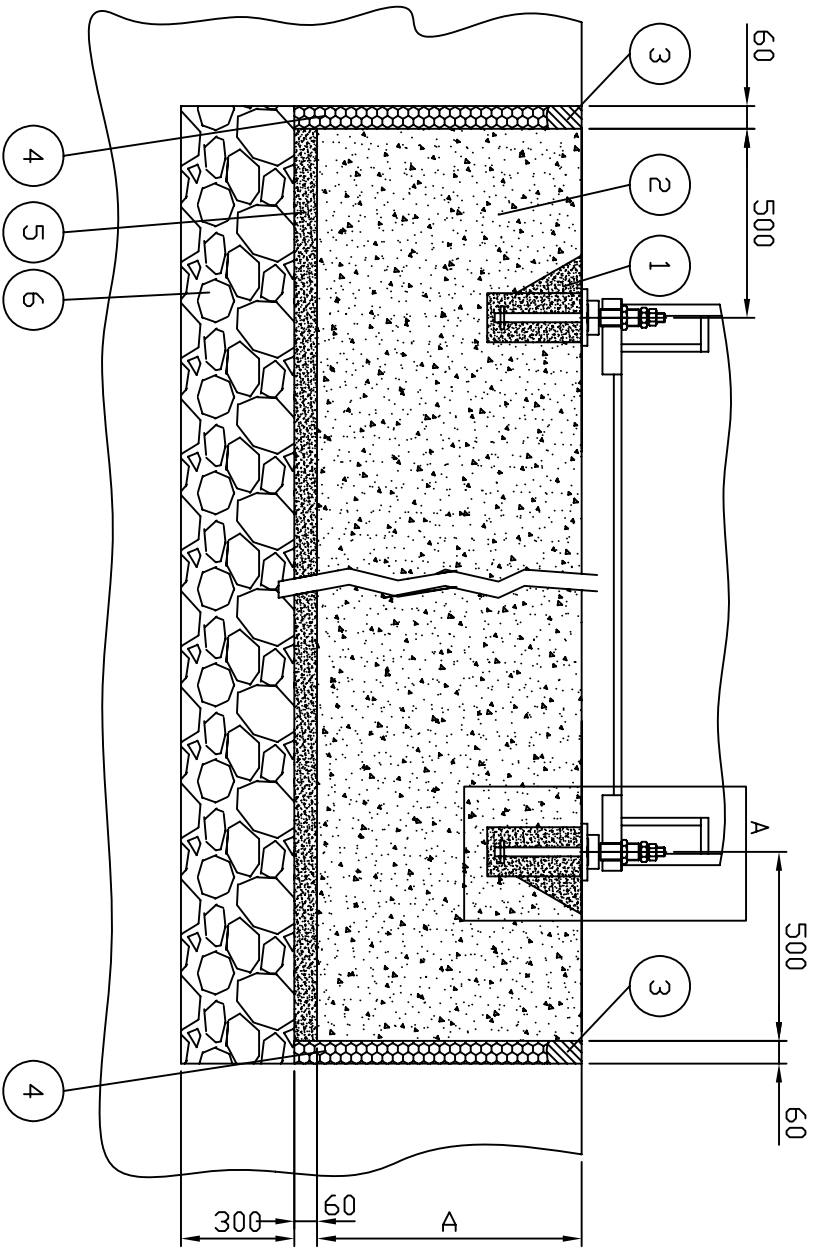
B (1:10)

Fill up with 5000pci cement
harden time about 3~5 days

Leaderway Machinery Co. Ltd.

Scale	Drawing Name			Page
1:20	PROCESS OF SETTING (地基施工圖)			2/2
	Name	Date	Draw No.	A4
	Drawn	96. 11. 20	8150198B0 (全機型)	
	Control	96. 11. 20		

A=350(V450/V650(V650HSM)/V33i/V42i)
 A=500(V1100/MV1100S/MV1100D/MV1300D/LX8/LX10
 A=700(LX1600/LX2200)
 A=1000(LX-B.....)



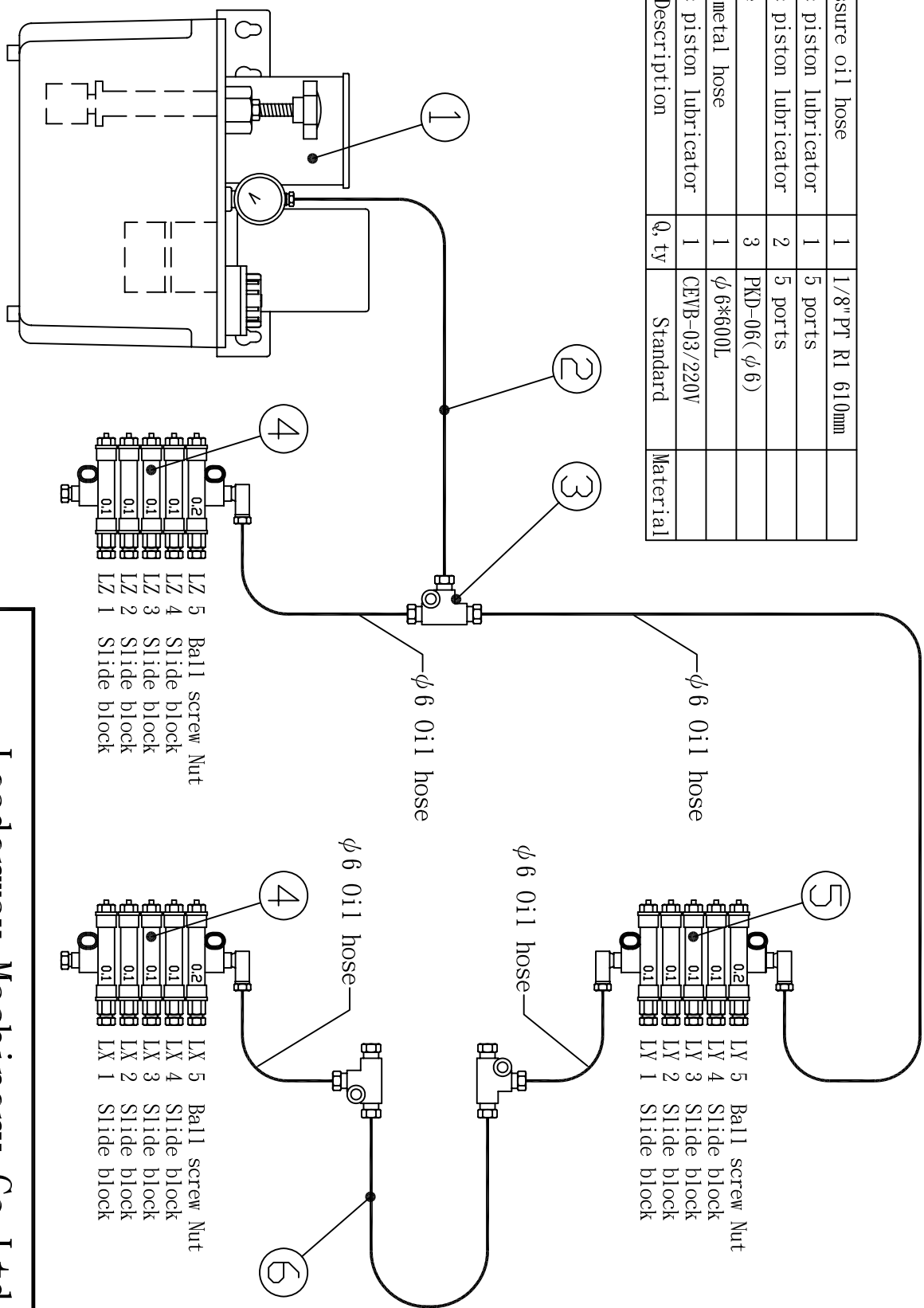
- 1> Concrete 5000pci
- 2> concrete 3000pci
- 3> Anti-oil/heat branze
- 4> Anti-vibration polyfoam
- 5> Anti-vibration sand
- 6> Round-shaps ston Dia 150~300

Leaderway Machinery Co. Ltd.

Scale 1:20
 Drawing Name PROCESS OF SETTING (地基施工圖)
 Page 1/2
 A4

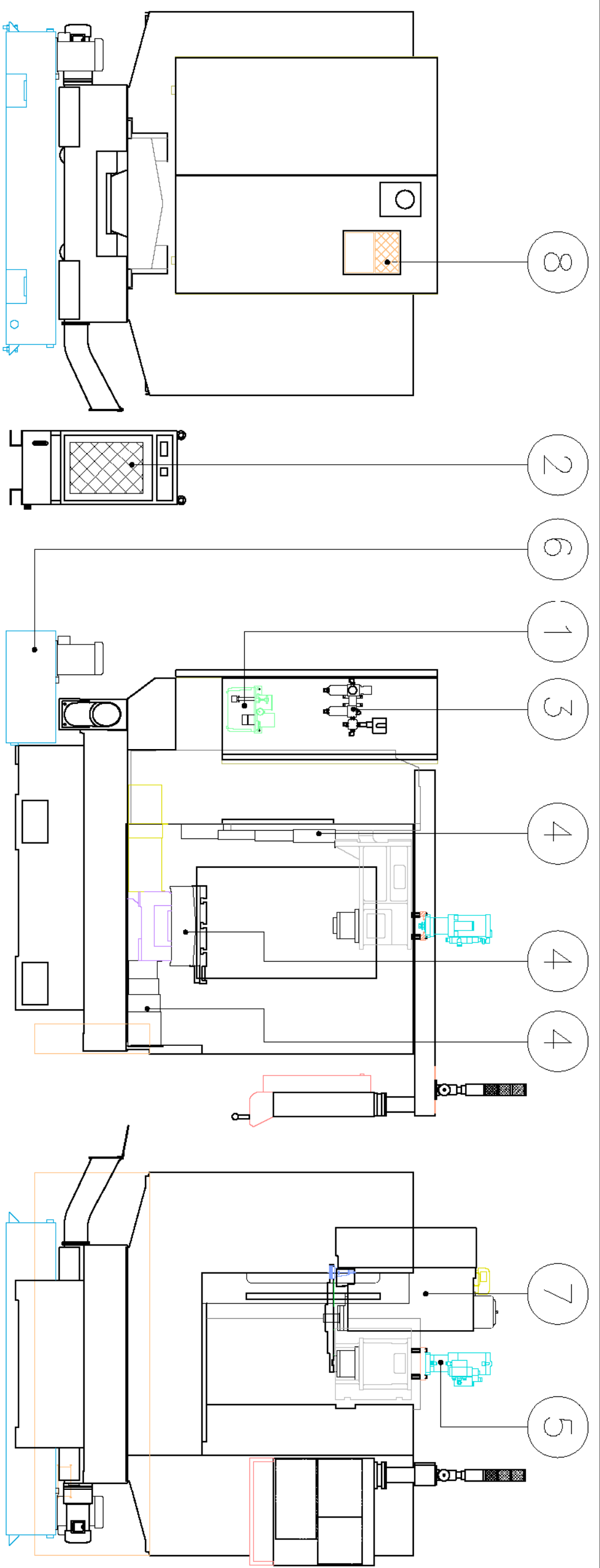
	Drawn	Name	jack	Date	96.11.20	Draw No. 8150198B0 (全機型)
	Control	Name	jack	Date	96.11.20	

6	High-Pressure oil hose	1	1/8" PT R1 610mm	
5	Automatic piston Lubricator	1	5 ports	
4	Automatic piston Lubricator	2	5 ports	
3	Equal tee	3	PKD-06(φ6)	
2	Flexible metal hose	1	φ6*600L	
1	Automatic piston Lubricator	1	CEVB-03/220V	
Item	Description	Q. ty	Standard	Material



Suitable Type:
V-450/V-650/V-33i/V-1100

Leaderway Machinery Co. Ltd.	
Scale 1 : 4	Drawing Name 潤滑油路配件組合圖 LUBRICATION ASSEMBLY DIAGRAM
Drawn 張靜宜	Date 97. 06. 05
Control	Draw No. 8150106B0
Page 1 / 1	
A4	



DAILY MAINTENANCE	1	2	3	4	5	6	7	8	9	10	11
OPERATING HOURS 											
MACHINE COMPONENT											
POINT N°	1	2	3	1	1	2	1	1	1	1	1
MAINTENANCE SYMBOL											
CHECK ITEMS											
MANUALLY LUBRICATION											
CHECK	8	8	8								8
CHANGE											
CLEAN			40					200			
CLEAN AND LUBRICATE				200					200		
CHECK AND FILL	8		200		40					8	200
DRAIN AND REFILL					2000					2000	
TYPE OF LUBRICANT (STANDARD ISO 3468)	VG-68	VG-22	VG-22	VG-68	VG-32	⑦	Mob#630		L-CKC220	VG-32	VG-32

ATTENTION: CLEAN ALL THESE POINTS THOROUGHLY BEFORE LUBRICATION

⑦ MOBILCUT 232-CONCENTRATION 7% KAL (PLEASE REFER TO END USER'S SUPPLIER MANUAL)

The machine part accessories listed above does not exactly accord with your sales order. Please refer to your sales order if any machine parts accessories differences.

Leaderway Machinery Co. Ltd.

V450/V650 每日保養表
THE SKETCH OF DAILY MAINTENANCE

Scale 1:23

Drawing Name V450/V650 每日保養表

Drawn 卜 振 云

Control

99.03.18

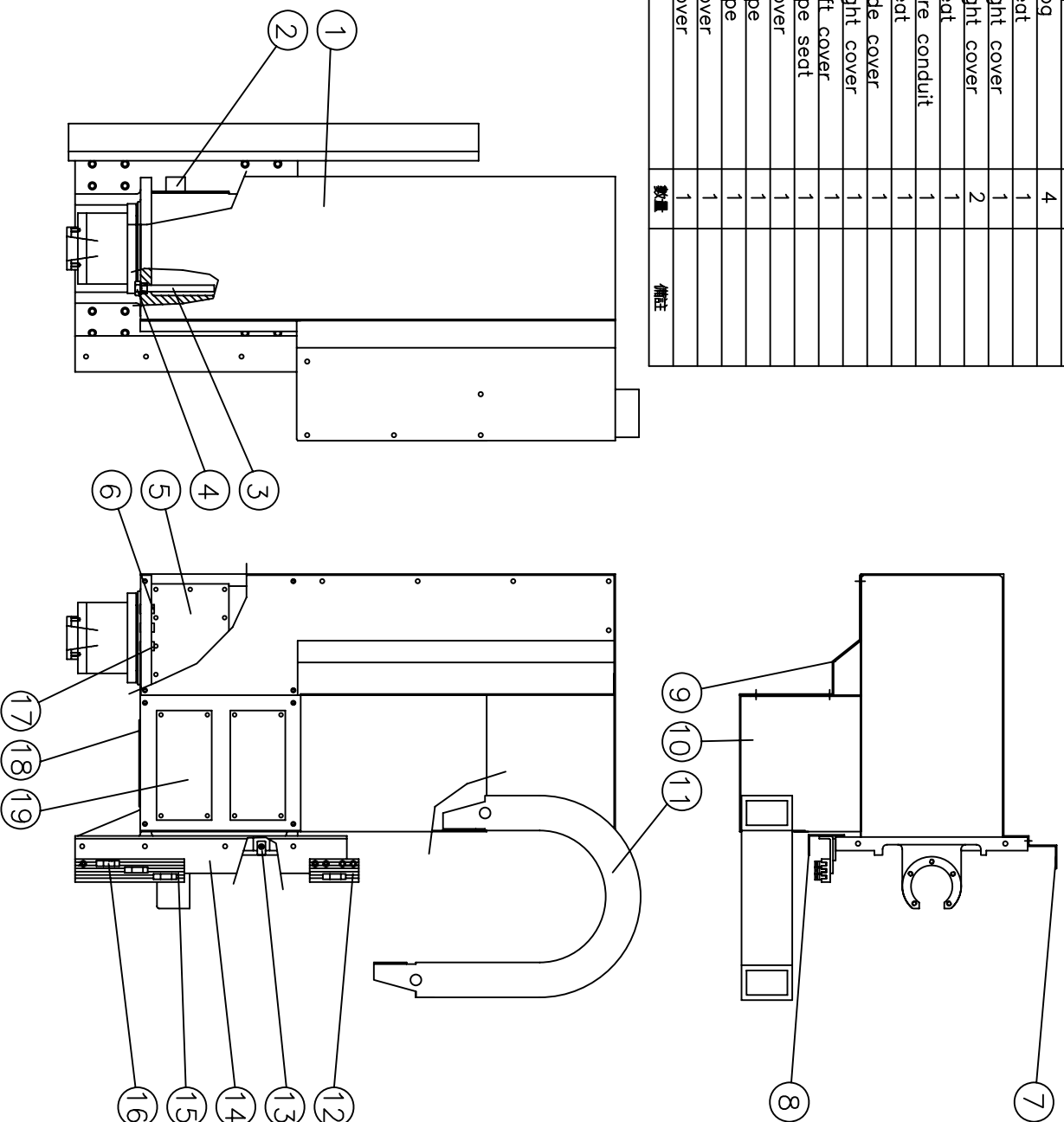
Draw No.

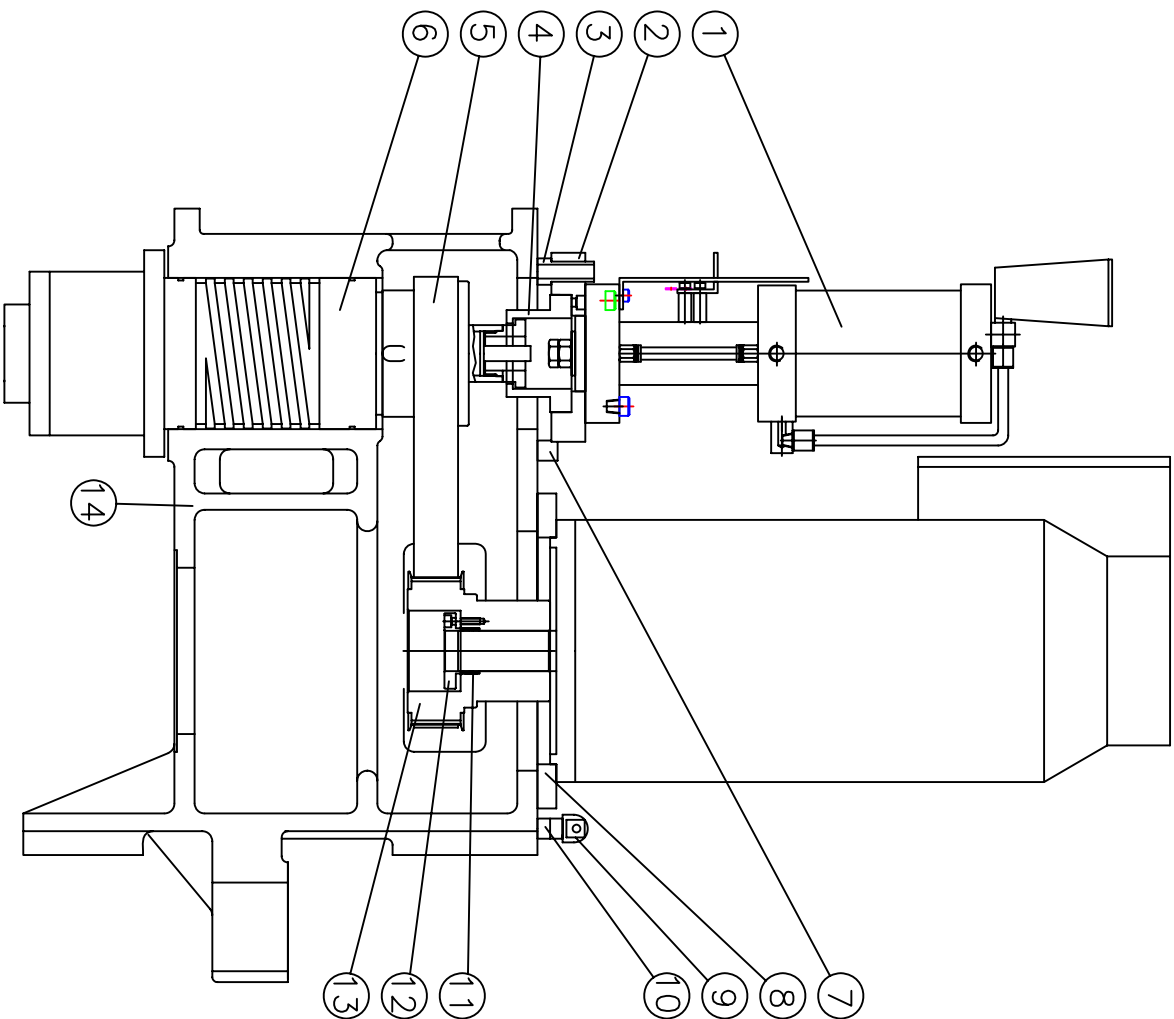
8150072C0

Page 1/1

A3

19	3500049A0	機頭側罩蓋板	side cover plate	2	
18	3500045A0	主軸頭下蓋板	cover	1	
17	3500307A0	管接頭座	pipe sear	2	
16	3500081A0	遊塊	dog	4	
15	3500014A0	遊塊座	sear	1	
14	3500056A0	主軸頭右邊蓋(-)	right cover	1	
13	3500012A0	游座壓塊	right cover	2	
12	3500083A0	游塊座	sear	1	
11	4640045075	方形通氣管	wire conduit	1	
10	3500046A0	通氣管支架	sear	1	
9	3500048A0	主軸頭側蓋	side cover	1	
8	3500057A0	主軸頭右邊蓋(+)	right cover	1	
7	3500064A0	主軸頭左邊蓋	left cover	1	
6	3500306A0	管接頭座	pipe sear	1	
5	3500051A0	主軸頭樣頭蓋板	cover	1	
4	3500308A0	管接頭	pipe	1	
3	3500309A0	亞管	pipe	1	
2	3500050A0	主軸頭樣頭蓋板	cover	1	
1	3500047A0	主軸頭罩	cover	1	
項目	料號	圖名	數量	備註	





14	3500004A0	主軸頭	spindle head	1	
13	3580162A0	主軸馬達皮帶輪	belt wheel	1	
12	3580161A0	馬達軸端蓋	cover	1	
11	4061232036	迫緊環	packing ring	2	
10	3500013A0	鎖絲螺絲座	screw seat	2	
9	3500023A0	鎖絲螺絲座	screw	2	
8	3500011A0	主軸馬達固定板	plate	1	
7	3500010A0	調整螺塊	block	2	
6	3980000A0	#40主軸單元	spindle	1	8000RPM
5	4600235840	齒型皮帶	gear type belt	1	
4	3500009A0	浮動打拉座	seat	1	
3	3500019A0	固定軸	bracket	4	
2	3500008A0	增壓缸固定座	seat	1	
1	3980001A0	增壓缸	cylinder	1	

台灣力得衛科技股份有限公司
Leaderway Machinery Co. Ltd.

圖名

主軸馬達單元
SPINDLE UNIT(8000RPM)

件號

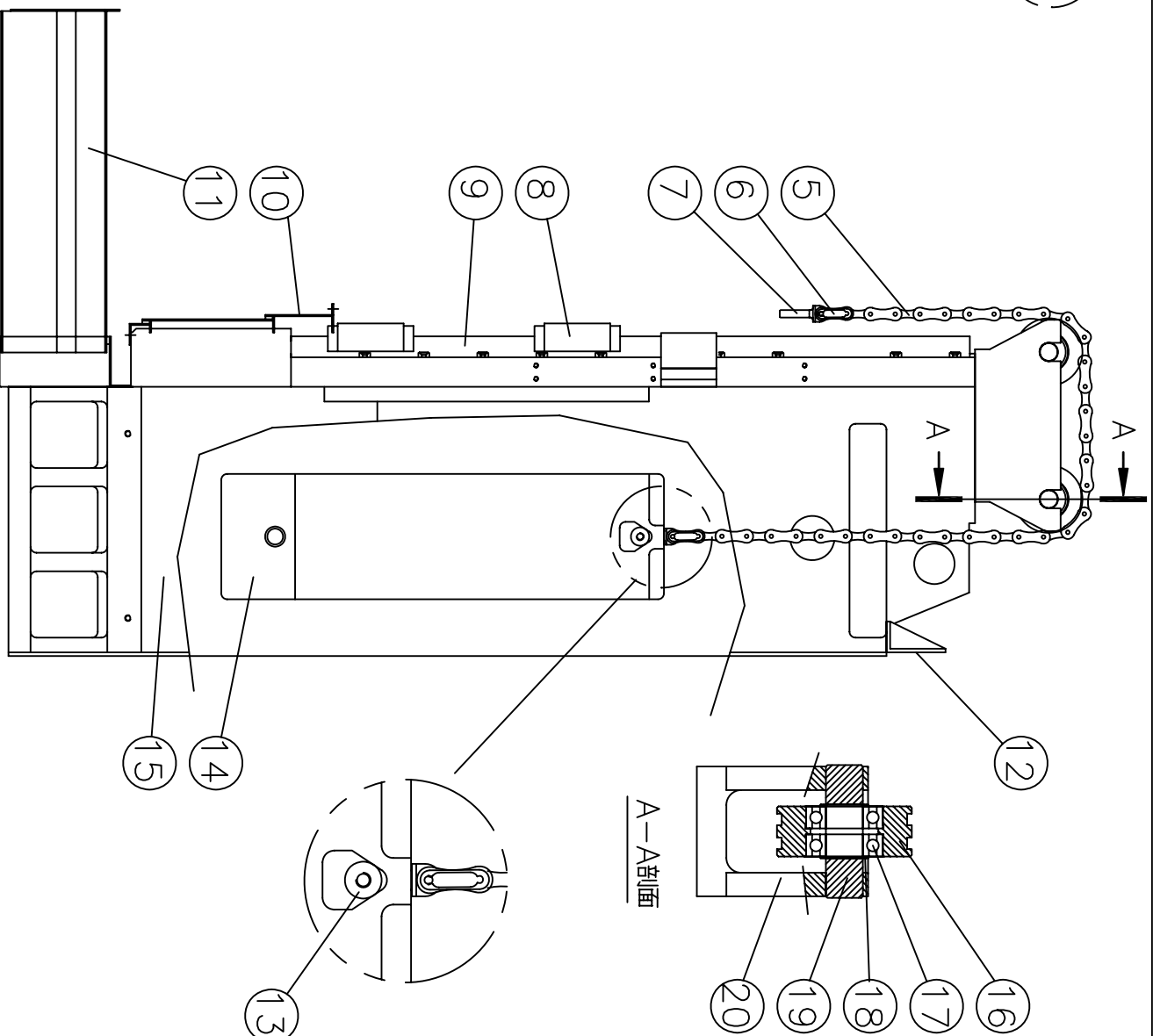
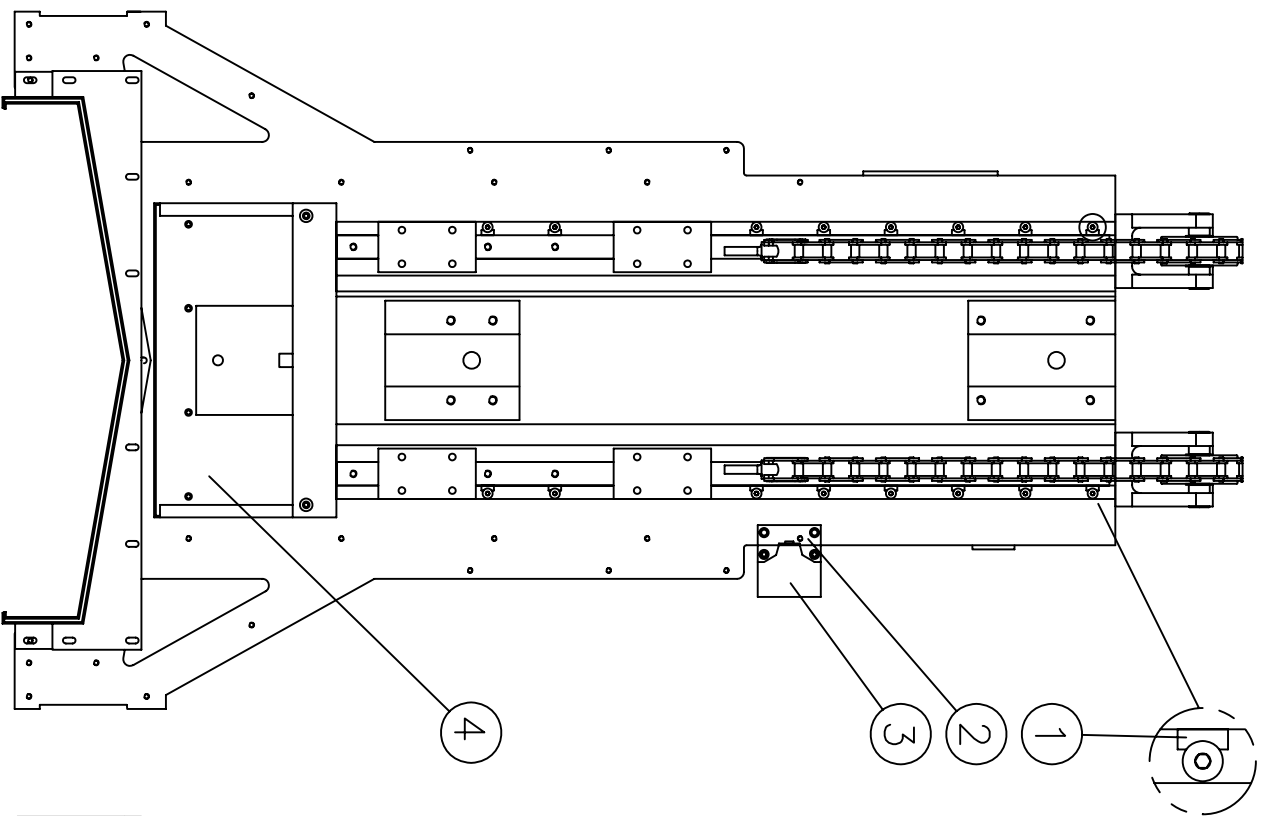
8120184

A 0

版本 加工序

比例：
1:6
單位：mm

A4



台灣力得衛科技股份有限公司
Leaderway Machinery Co. Ltd.

圖名

立柱&配重單元
COLUMN UNIT

件號

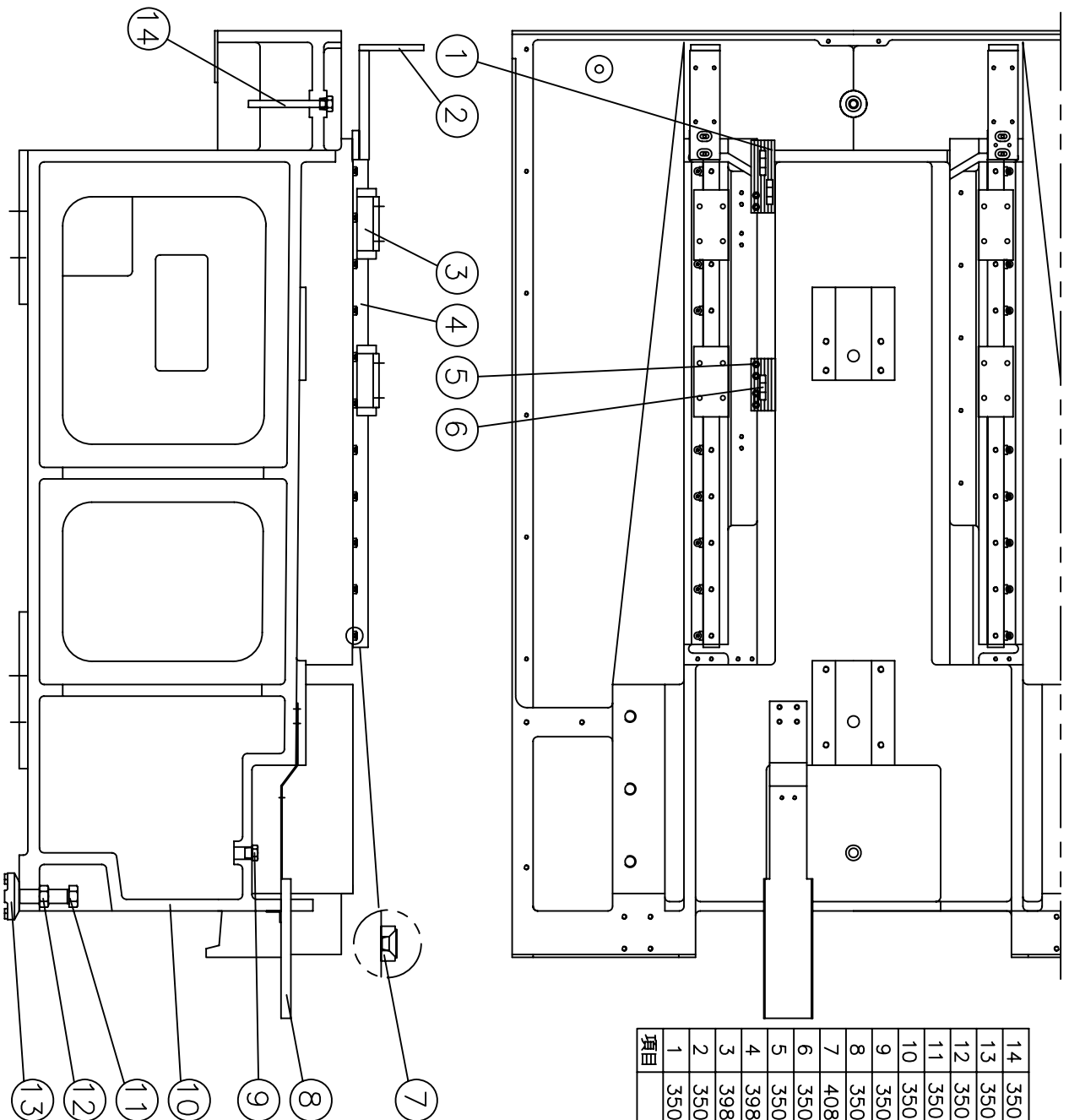
8120011

A0
版本 加工序

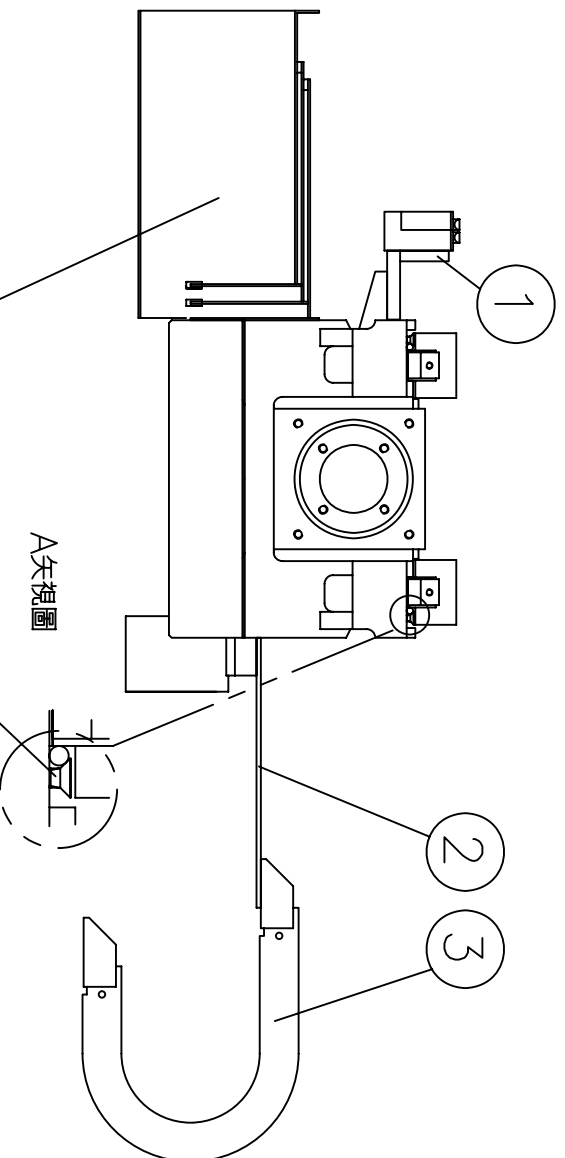
比例：
1:9
單位：mm

A4

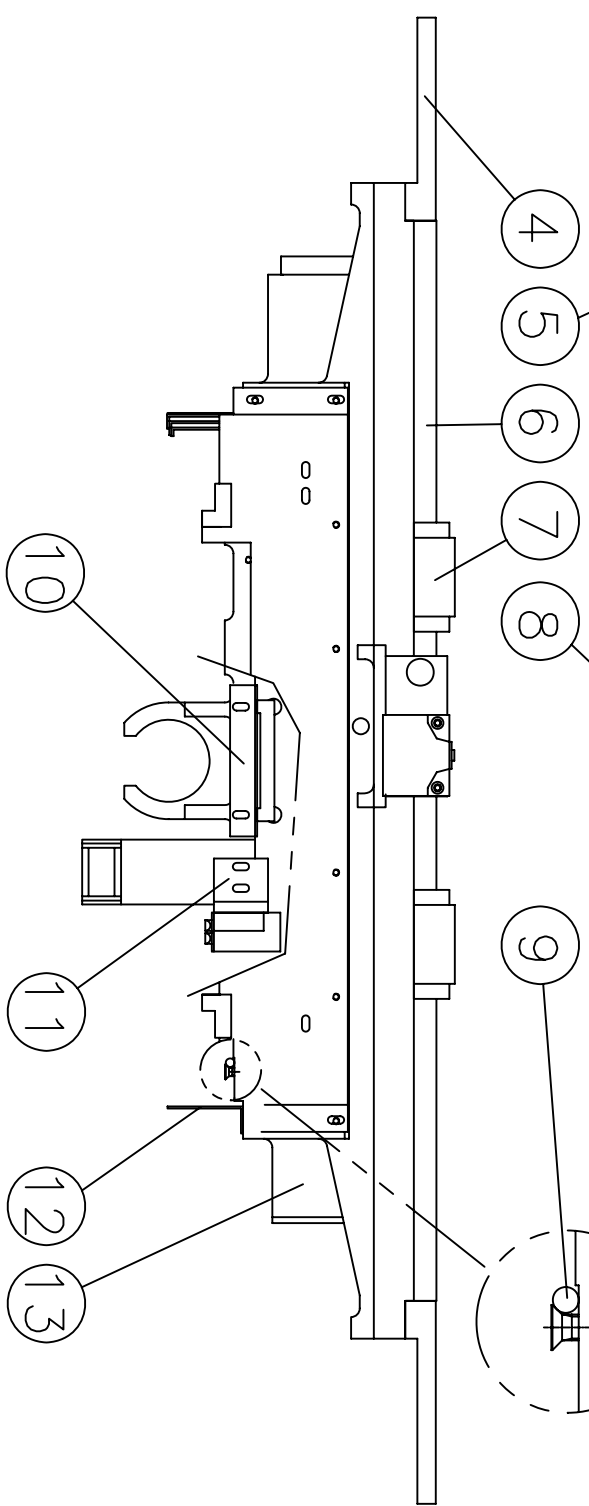
20	3500006A0	鏈輪軸固定座	chain-wheel fixed seat	2	
19	3500022A0	鏈輪軸	chain-wheel axis	4	
18	4060700025	C型扣環	C-type buckle	8	
17	4400206205	深槽滾珠軸承	deep-groove roller bearing	8	
16	3500021A0	鏈條滾輪	chain-rolling-wheel	4	
15	3500005A0	立柱加工	column	1	
14	3500007A0	配重	gravity distribution	1	
13	3500024A0	配重上固定桿	fixed pole of gravity distribution	1	
12	3500148A0	電氣箱上固定架	fixed-bracket on electric box	2	
11	3500090A0	Y軸後摺動罩	Y-axis rear flexible cover	1	
10	3500041A0	Z軸下摺動罩	Z-axis lower flexible cover	1	
9	3985006A0	導軌	guard rail	2	
8	3985001A0	導軌座	seat of guard rail	4	
7	3500023A0	鏈條連結螺絲	chain connected screw	4	
6	4610200050	鏈條接目	joint of chains	4	
5	4610050061	鏈條	chain	2	
4	3500042A0	Z軸下蓄油盤	oil-reserving plate of Z-axis	1	
3	4800143204	微動開關	switch	24	
2	3500016A0	微動開關座	micro switch	1	
1	4080106015	直銷	verical pin	1	
項目	料號		名稱	數量	備註



項目	料號	名稱	數量	備註
14	3500309A0	亞管	1	pipe
13	3500086A0	螺帽	1	nut
12	3500085A0	地基螺絲	6	screw
11	3500073A0	地基墊塊	6	ground blocks
10	3500070A0	底座	1	frame bottom
9	3500308A0	管接頭	2	pipe
8	3500105A0	Y軸連動臂下支架	1	bracket
7	4080106015	直銷	22	pin
6	3500081A0	磁塊	3	dog
5	3500083A0	磁塊座	1	seat
4	3985003A0	導軌	2	guide way
3	3985005A0	導軌座	4	guide way bracket
2	3500075A0	Y軸連動臂支架	2	bracket
1	3500082A0	磁塊座	1	seat



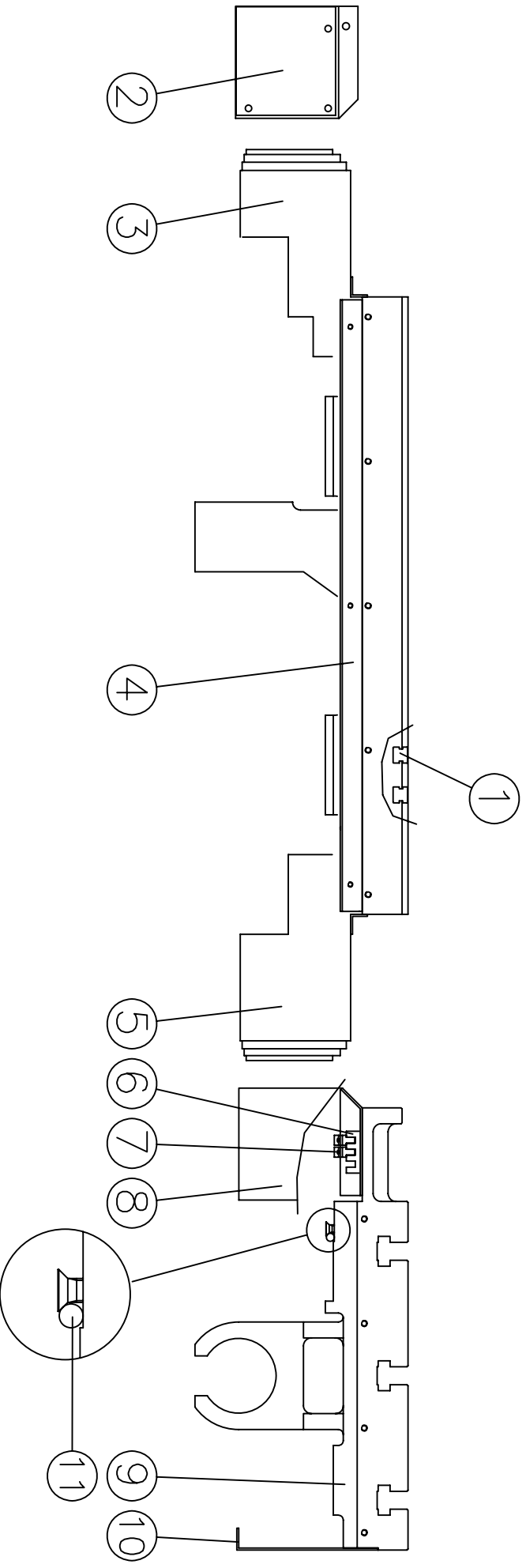
A矢視圖



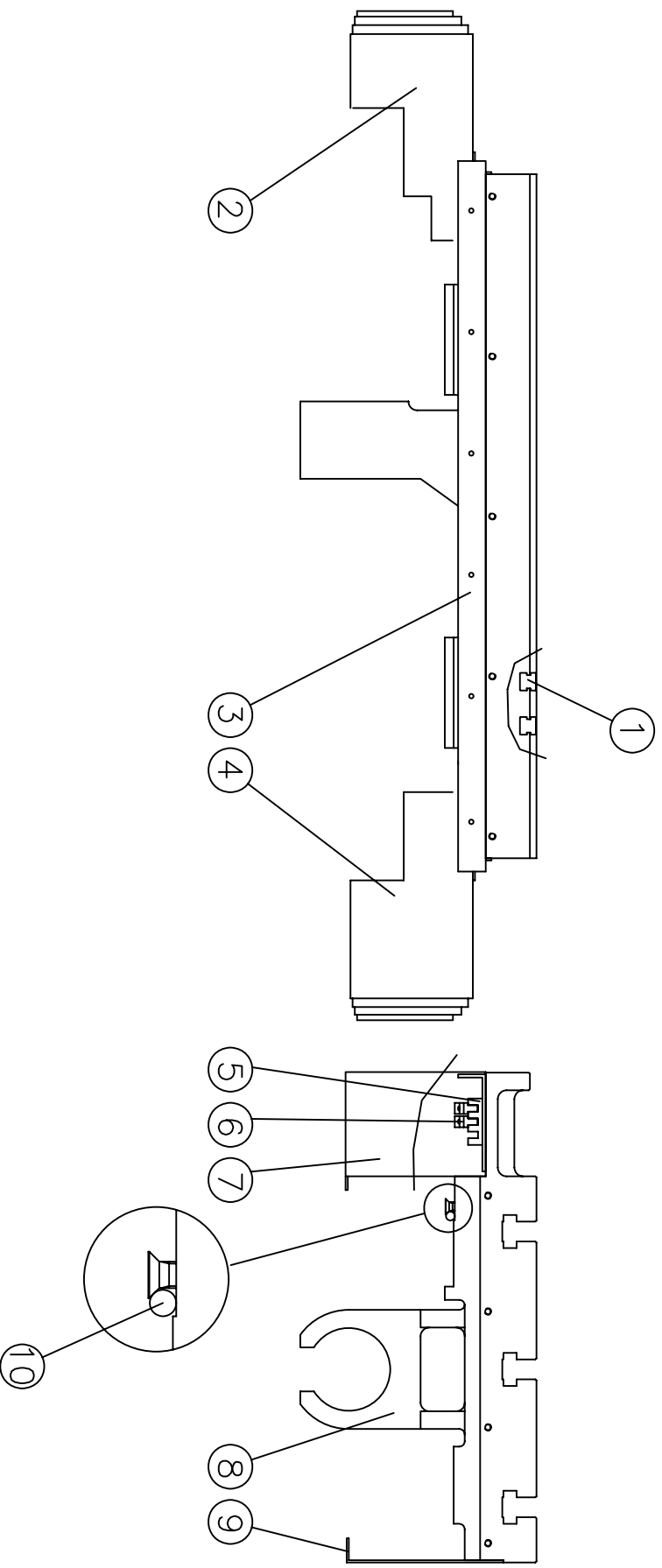
A

項目	料號	名稱	數量	備註
13	3500071A0	鞍座	1	
12	3500089A0	鞍座 防水板	2	
11	3500080A0	微動開關座	1	
10	3500104A0	分由塊座	1	
9	4080108080	直銷	2	
8	4080106015	直銷	26	
7	3985000A0	導軌座	4	
6	3985002A0	導軌	2	
5	3500091A0	Y軸前擋動罩	1	
4	3500079A0	擋動罩支架	4	
3	4640000001	方型導軌管	1	
2	3500106A0	Y軸連動管上支架	1	
1	3500084A0	微動開關座	1	

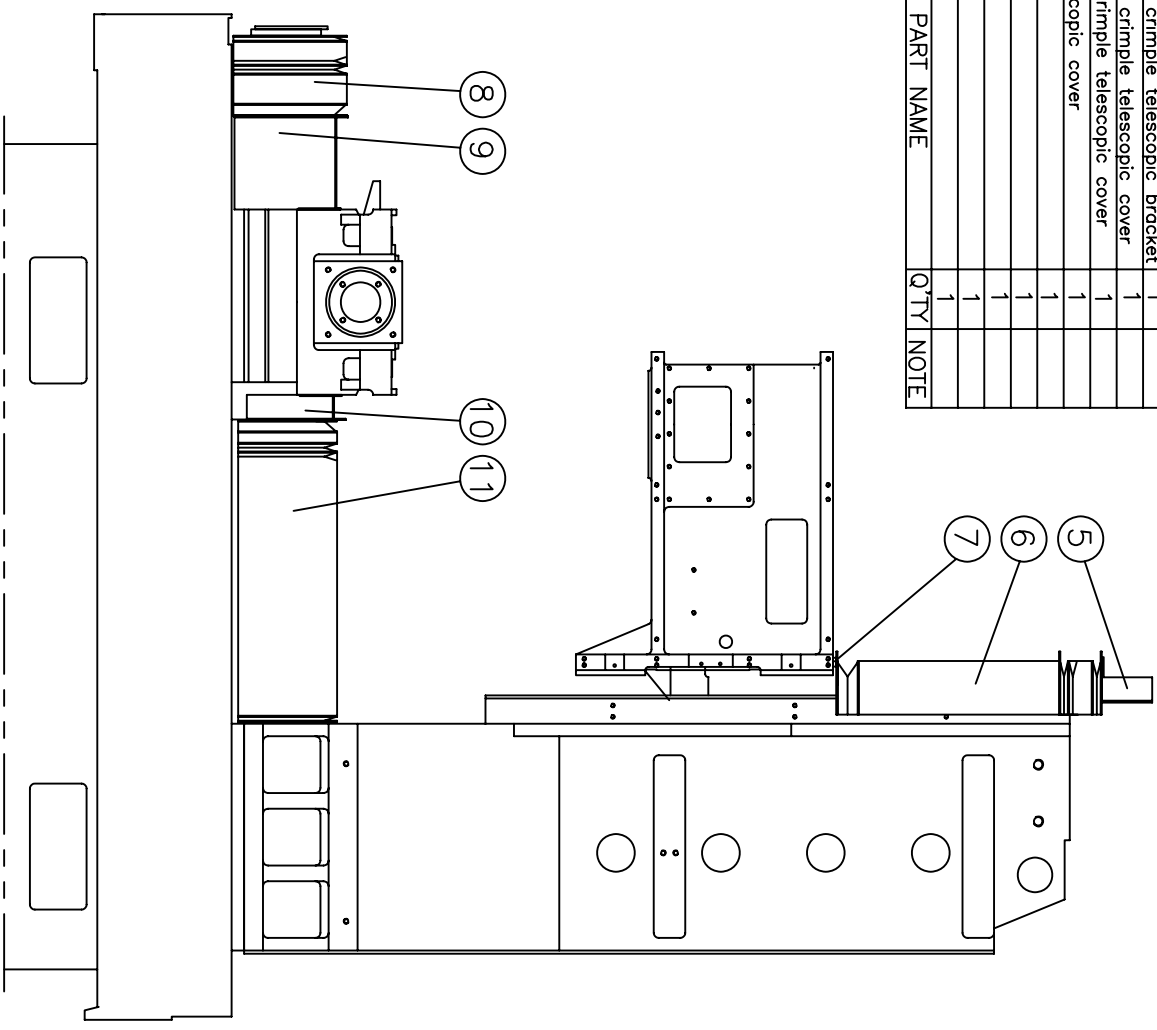
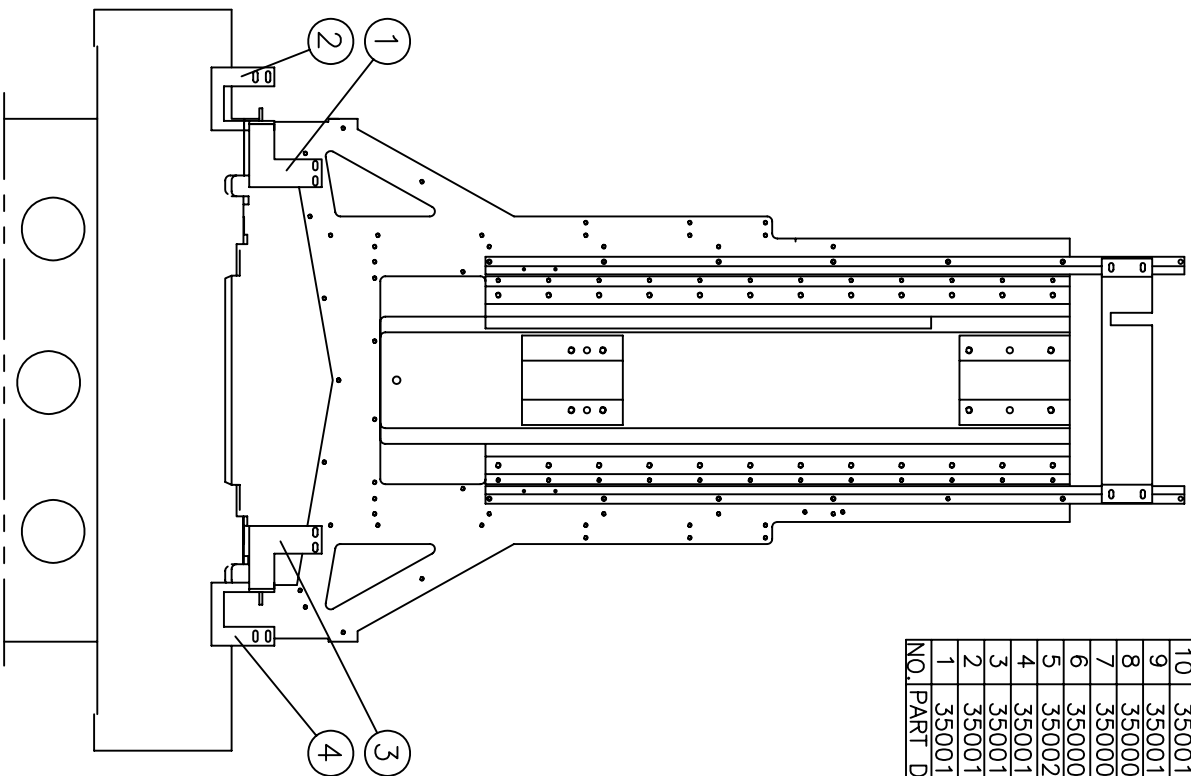
11	4080108080	vertical pin	2	
10	3500098A0	rear decorated board	1	
9	3500072A0	working table	1	
8	3500234A0	front decorated board	1	
7	3500081A0	collision block	3	
6	3500083A0	collision block seat	2	
5	3500110A0	flexible cover bracket	2	
4	3500235A0	front decorated board seat	1	
3	3500111A0	flexible cover bracket	1	
2	3500236A0	cover	1	
1	3500074A0	working table plug	16	
NO.	PART DRAW NO.	PART NAME	Q'TY	NOTE



10	4080108080	直銷	vertical pin	2	
9	3500098A0	工作台後飾板	rear decorated board	1	
8	3500072A0	工作台	working table	1	
7	3500113A0	工作台前飾板	front decorated board	1	
6	3500081A0	磁塊	collision block	3	
5	3500083A0	磁塊座	collision block seat	2	
4	3500110A0	X軸驅動罩	flexible cover bracket	2	
3	3500112A0	工作台前飾板座	front decorated board seat	1	
2	3500111A0	X軸驅動罩	flexible cover bracket	1	
1	3500074A0	工作台塞頭	working table plug	16	
項目	料號		名稱	數量	備註



11	3500040A0	Y-axis rear crimple telescopic cover	1	
10	3500121A0	Y-axis rear crimple telescopic bracket	1	
9	3500120A0	Y-axis front crimple telescopic bracket	1	
8	3500039A0	Y-axis front crimple telescopic cover	1	
7	3500066A0	bracket of crimple telescopic cover	1	
6	3500038A0	crimple telescopic cover	1	
5	3500252A0	bracket	1	
4	3500118A0	right track	1	
3	3500116A0	right bracket	1	
2	3500119A0	left track	1	
1	3500117A0	left bracket	1	



台灣力得衛科技股份有限公司
Leaderway Machinery Co. Ltd.

圖名

蛇腹式伸縮防護罩單元

CRIMPLE TELESCOPIC COVER

件號

8120062

A

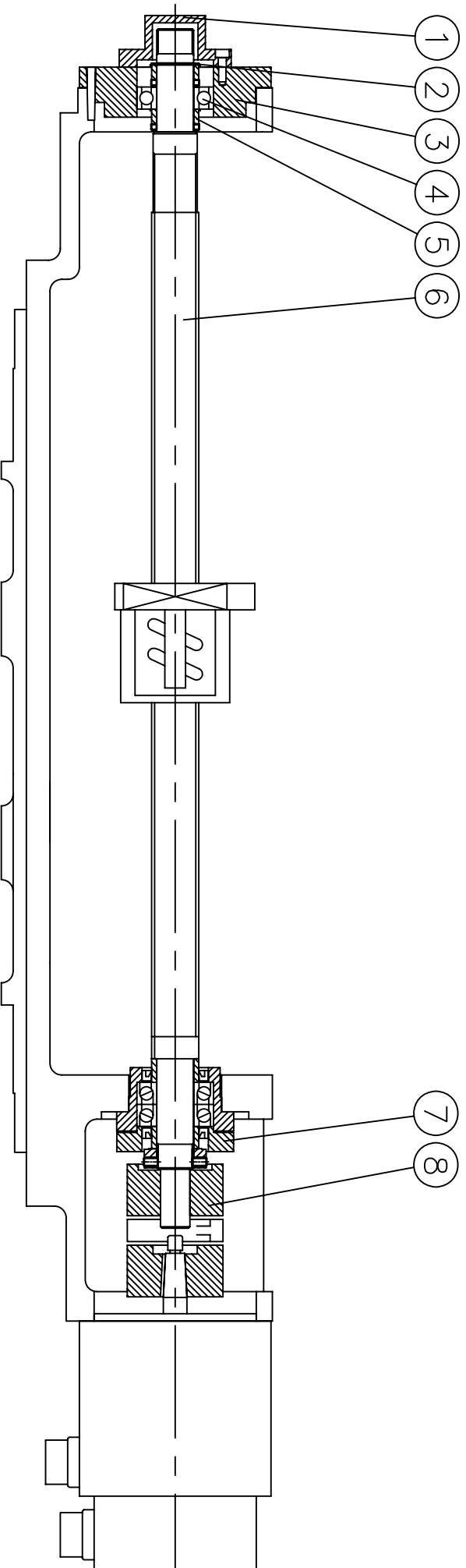
0

版本 加工序

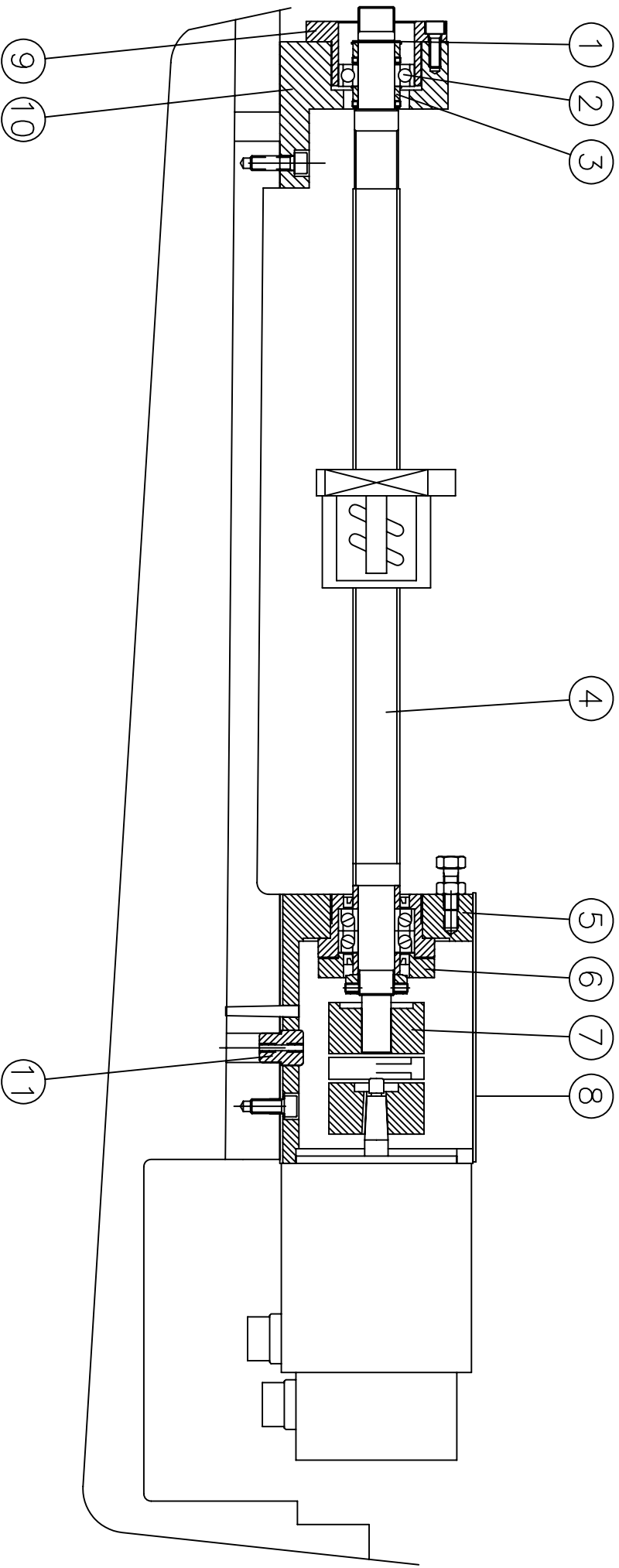
比例：
1:12
單位：mm

A4

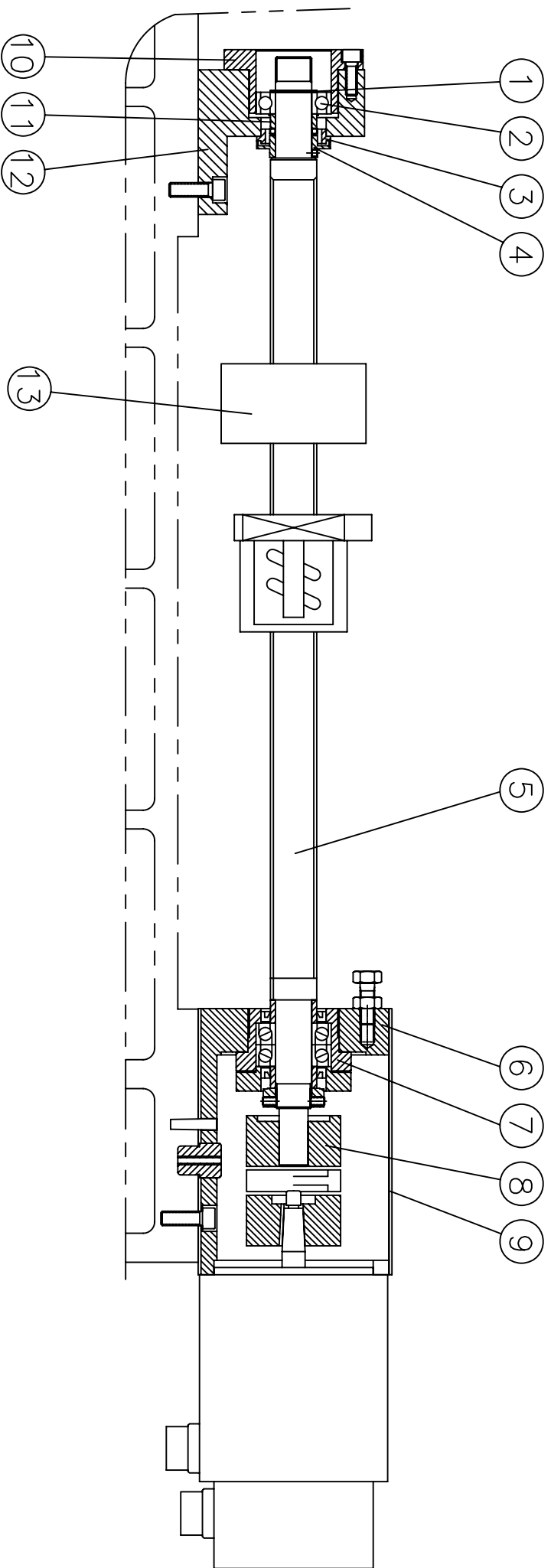
8	4620020016	軸聯結器	axis coupler	1	
7	3500273A0	傳動軸性單元	transmission axis unit	1	
6	3984000A0	X軸Ball screw	X-axis ball screw	1	
5	3500290A0	隔環	space ring	2	
4	4400206205	深槽滾珠軸承	deep-groove roller bearing	1	
3	3500288A0	軸承座	bearing seat	1	
2	4060700025	C型扣環	C-type buckle	1	
1	3500289A0	軸承蓋	bearing cover	1	
項目	料號	名稱	數量	備註	

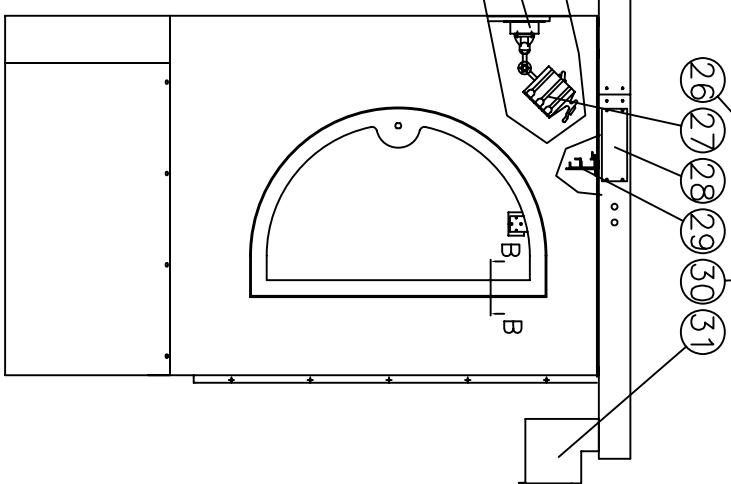
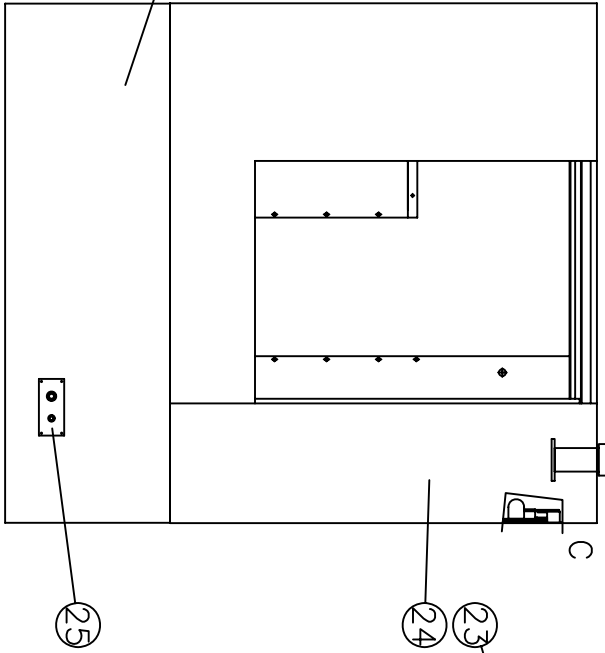
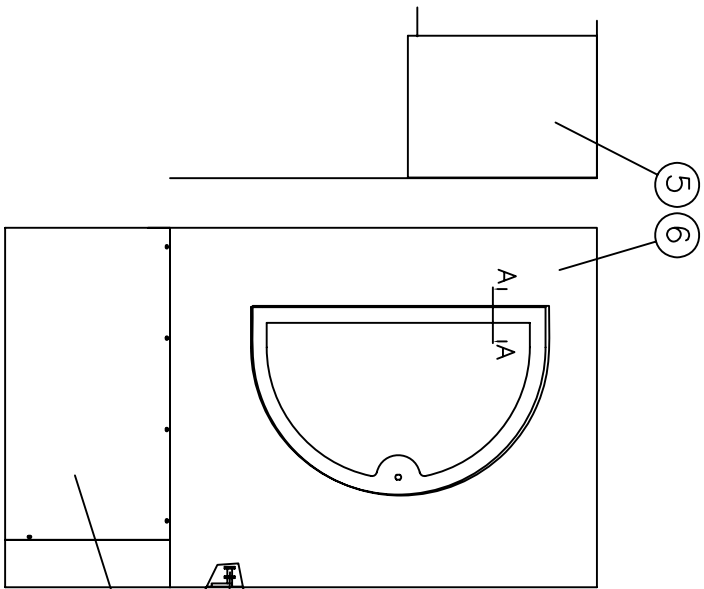
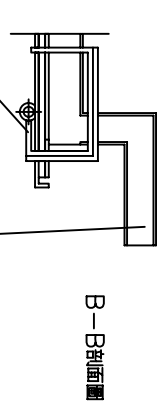
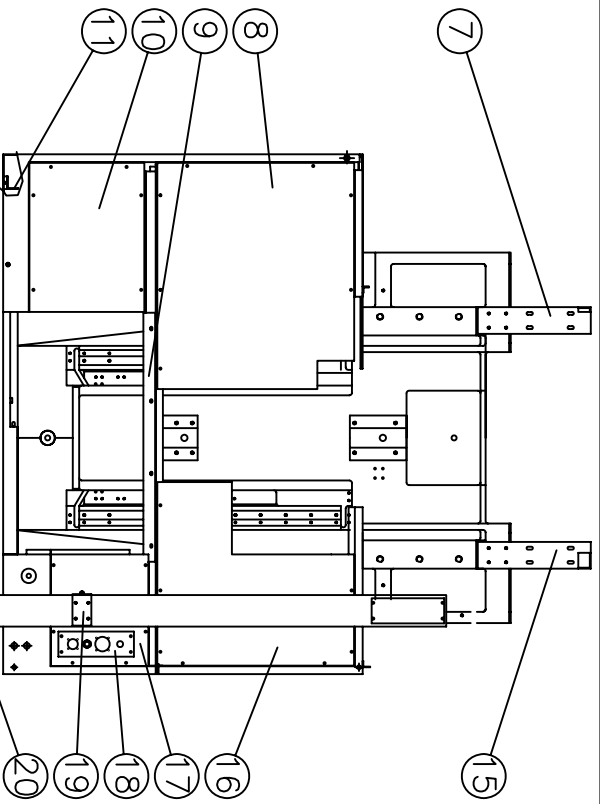
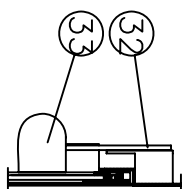
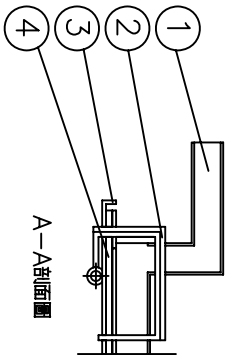


11	3500294A0	定位銷	fixed position pin	1	
10	3500283A0	尾端軸承座	end-journal bearing seat	1	
9	3500291A0	軸承座	bearing seat	1	
8	3500284A0	傳動座蓋板	cover plate of transmission seat	1	
7	4620020016	軸聯結器	axis coupler	1	
6	3500273A0	傳動軸性單元	transmission axis unit	1	
5	3500282A0	傳動座	transmission seat	1	
4	3984001A0	Y軸Ball screw	Y-axis ball screw	1	
3	3500290A0	隔環	space ring	2	
2	4400206205	深槽滾珠軸承	deep-groove roller bearing	1	
1	4060700025	C型扣環	C-type buckle	1	
項目	料號	名稱	數量	備註	



13	3500295A0	檔塊	adjustable dog	1	
12	3500283A0	尾端軸承座	end-journal bearing seat	1	
11	3500290A0	隔環	space ring	1	
10	3500291A0	軸承座	bearing seat	1	
9	3500284A0	傳動座蓋板	cover plate of transmission seat	1	
8	4620020016	軸聯結器	axis coupler	1	
7	3500273A0	傳動軸性單元	transmission axis unit	1	
6	3500282A0	傳動座	transmission seat	1	
5	3984002A0	Z軸Ball screw	Z-axis ball screw	1	
4	3500292A0	防水隔環(A)	water-proof space ring(A)	1	
3	3500293A0	防水隔環(B)	water-proof space ring(B)	1	
2	4400206205	深槽滾珠軸承	deep-groove roller bearing	1	
1	4060700025	C型扣環	C-type buckle	1	
項目	料號		名稱	數量	備註





UNIT: mm

SCALE: 1:24

COVER UNIT

8120101B0

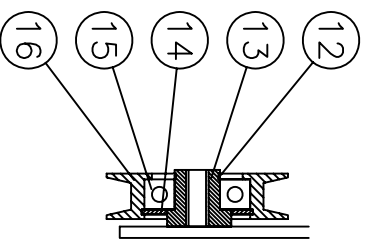
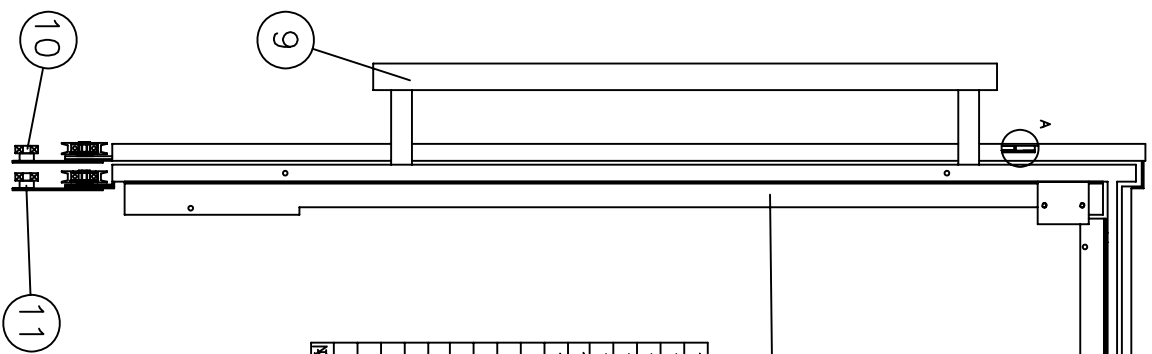
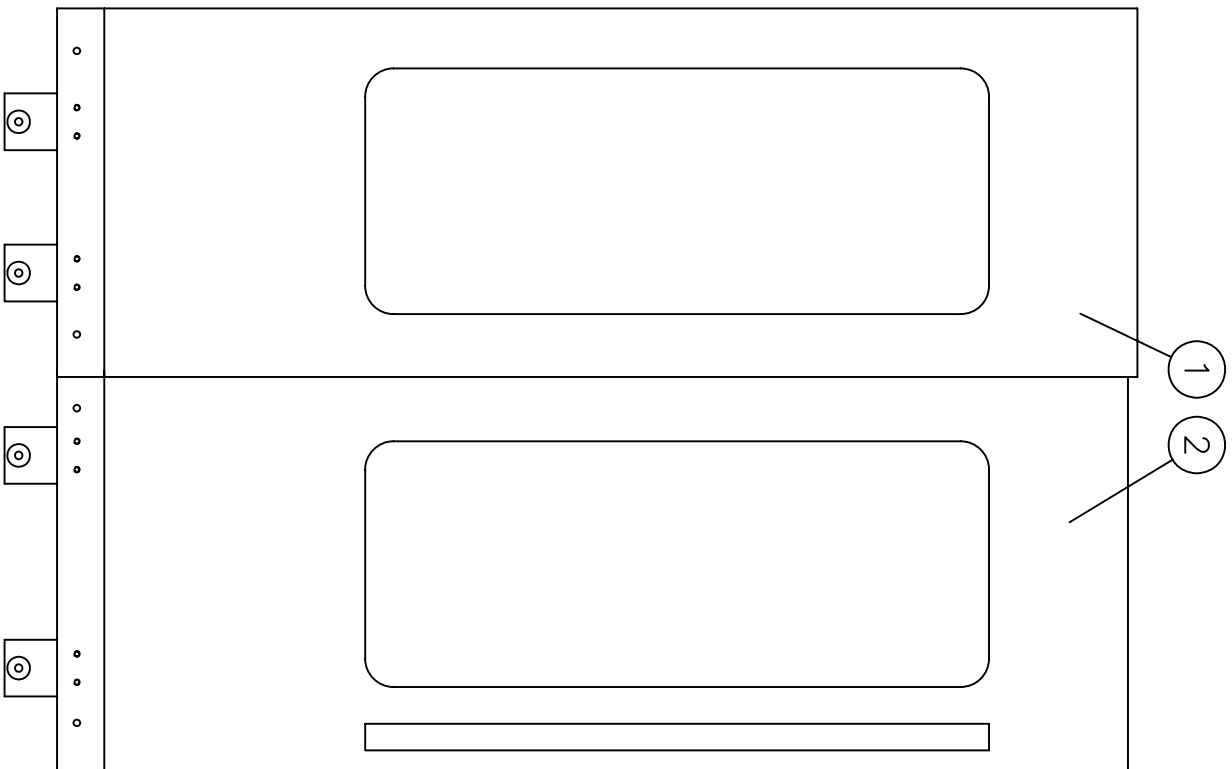
33	3520137A0	CE lock seat	2	
32	3520136A0	CE lock seat	2	
31	3580027A0	seat	1	
30	3520140A0	pushing pad, right door	1	
29	3500361A0	upper-door-rail	1	
28	3580037A0	cover, outstretched arm	2	
27	4720700001	working lamp	1	
26	3520132A0	right door lock	1	
25	3500159A0	water gun / air gun seat	1	
24	3500374A0	right guard cover	1	
23	3580089A0	seat of working lamp	1	
22	3580063A0	extend arm of operational box	1	
21	4720632400	alarm lamp	1	
20	3580026A0	seat of alarm lamp	1	
19	3580039A0	linking cover, outstretched arm	1	
18	3520192A0	cover	1	
17	3500357A0	right upper front cover	1	
16	3500338A0	right upper rear cover	1	
15	3500154A0	left bracket of electric box	1	
14	3500342A0	lower decorated board of guard cover	2	
13	3500341A0	front decorated cover of guard cover	1	
12	3500323A0	lower-door-rail	1	
11	3580044A0	shield cover, front door	1	
10	3580067B0	left upper front cover	1	
9	3500330A0	cover, upper door way bracket	1	
8	3500336A0	left upper cover	1	
7	3500155A0	right bracket of electric box	1	
6	3500373A0	left guard cover	1	
5	3500343A0	left side rear cover	1	
4	3520174A0	side-door acrylic board	2	
3	3520138A0	side-door	2	
2	3520133A0	left door lock	2	
1	3500141A0	pushing pad, left door	1	
NO.	PART NO.	PART NAME	Q'TY	NOTE

UNIT: mm

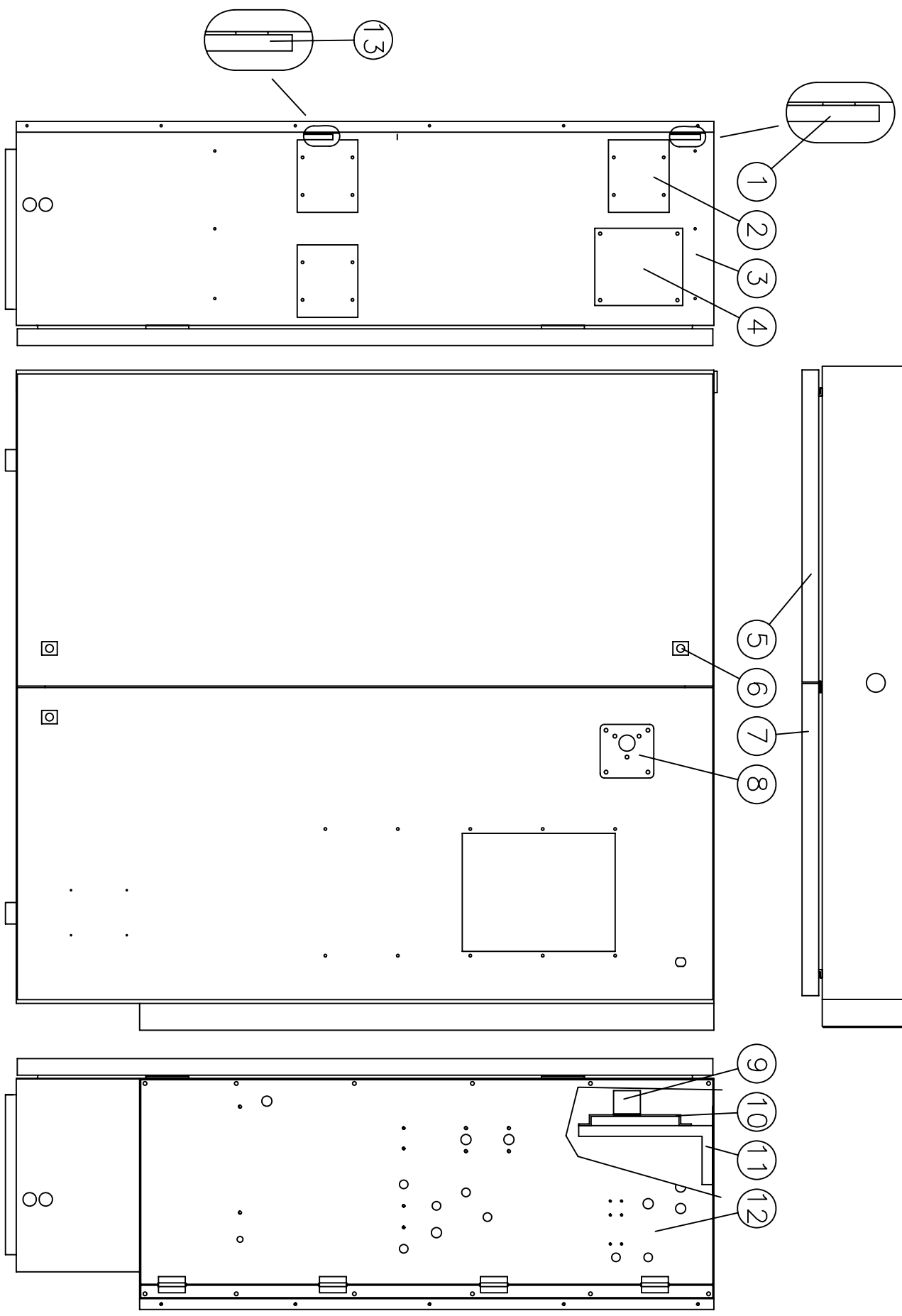
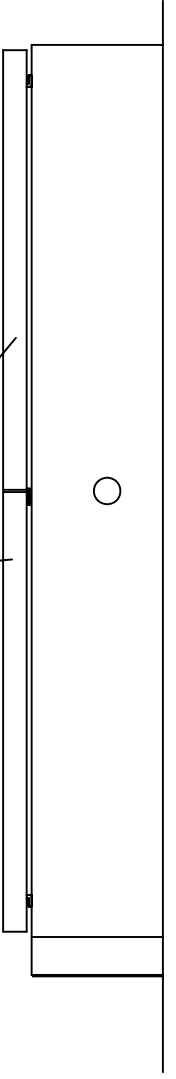
SCALE:1:24

COVER UNIT

8120101B0



序號	PART NAME	數量	備註
16	3520055A0	4	Door wheel
15	4400206001	4	Roller roller bearing
14	4060600028	4	Door buckle
13	3520054A0	4	Door wheel axis
12	4060700012	4	Door buckle
11	3580024A0	4	Door roller
10	4402000628	12	Roller ring
9	4300400600	1	Door handle
8	3500367A0	1	Roller guard of front door
7	3500332A0	2	Roller guard of acrylic board
6	3500335A0	2	Roller guard of acrylic board
5	3500331A0	1	Roller guard of front door
4	3500363A0	1	Roller wheel seat
3	3500362A0	1	Roller wheel seat
2	3500368A0	1	Roller door
1	3500369A0	1	Roller door



UNIT: mm

SCALE: 1:10

ELECTRIC BOX

8120104A0

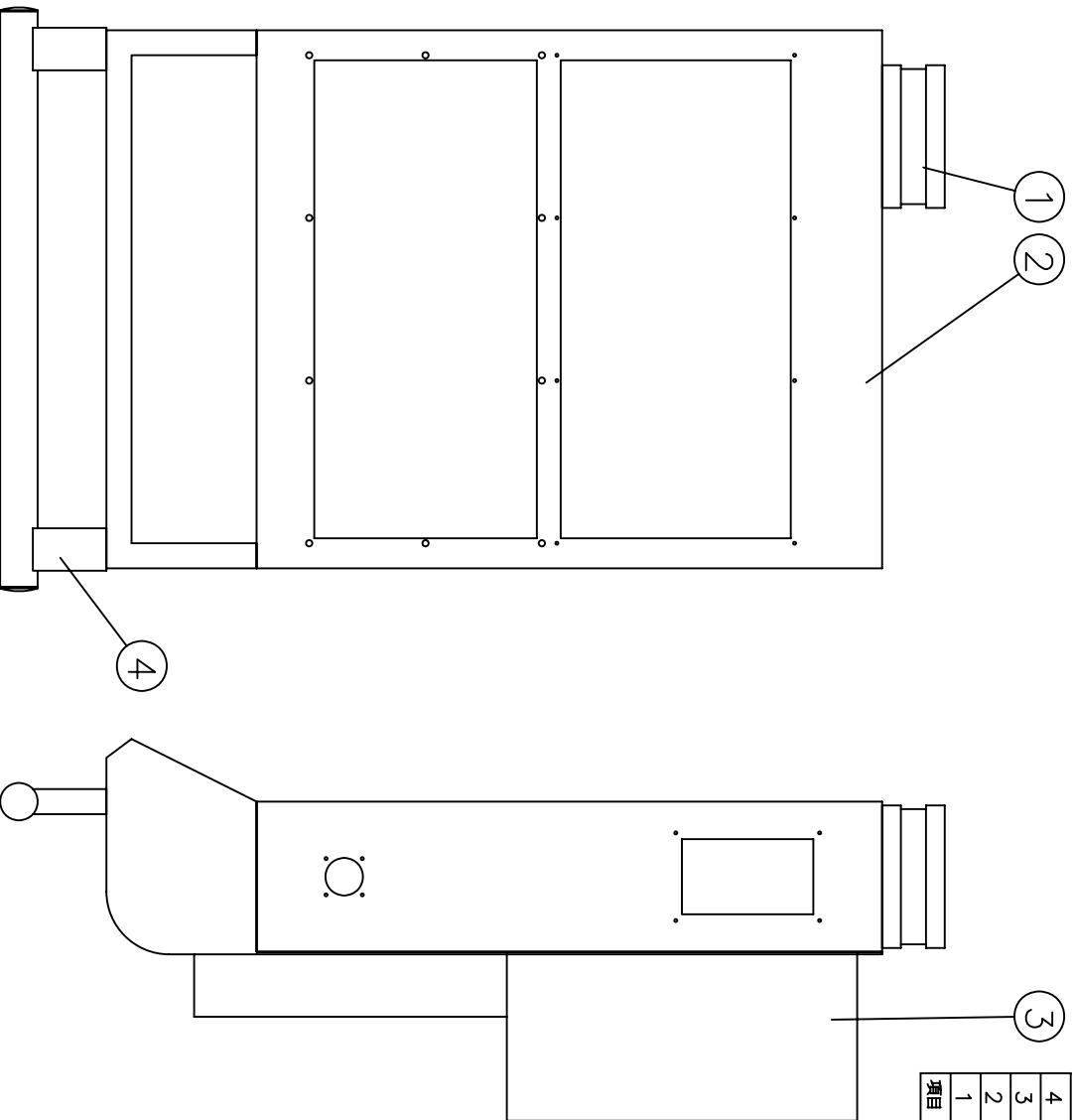
13	3500345A0	I/O mother board	1	
12	3500053B0	3-points assembly pipe distribution seat	1	
11	3500149A0	main power switch seat	1	
10	3500150A0	left / right adjustables seat	1	
9	3500249A0	handle seat(CE)	1	
8	3500151A0	switch handle seat(CE)	1	
7	3580052B0	left door of electric box	1	
6	4090500403	lock	3	
5	3580051B0	right door of electric box	1	
4	3500184A0	fan's cover plate	1	
3	3580050B0	electric box frame	1	
2	3500183A0	side cover plate of electric box	3	
1	3500348A0	I/O mother board	1	
NO.	PART NO.	PART NAME	Q'TY	NOTE

UNIT: mm

SCALE:1:10

ELECTRIC BOX

8120104A0



項目	料號	名稱	數量	備註
4	4300400400	把手	1	U1-400L
3	3500326A0	操作箱後蓋	1	
2	3500325A0	操作箱	1	
1	3500129A0	旋轉座	1	V104001T0

UNIT: mm

SCALE: 1:6

OPERATION UNIT

8120084A0